



MAURITIUS PRISON SERVICE


MONITI MELIORA SEQUAMUR

MAURITIUS PRISON SERVICE ANNUAL REPORT 2020

 401 6600

 pris@govmu.org

 prisons.govmu.org

 Subramanien Bharati Road,
Beau Bassin

 **HOTLINE**
135

Contents

ROLL OF COMMISSIONERS.....	2
INTRODUCTION.....	3
ORIGIN OF PRISONS.....	4
MISSION, VISION, GOALS AND OBJECTIVES	5
STRATEGIC DIRECTION	6
STRATEGIC PLANNING AND RESEARCH UNIT	11
OPERATIONAL STRUCTURE.....	13
ORGANIGRAM - BADGES OF RANK.....	14
ORGANIGRAM – CRIMINAL JUSTICE SYSTEM	15
GENERAL OVERVIEW.....	16
STATISTICS	25
PRISON HEALTH CARE SERVICE.....	32
COVID-19.....	41
PROCUREMENT & SUPPLY.....	43
E-PRISON PROJECT.....	45
FINANCE OVERVIEW	47
PRISON TRAINING SCHOOL.....	49
HUMAN RESOURCE.....	55
REHABILITATION & WELFARE PROGRAMME.....	57
WORKSHOP OVERVIEW.....	61
DASHBOARD-ANNUAL REPORT ON PERFORMANCE FOR FINANCIAL YEAR 2020 - 2021.....	86
ABBREVIATIONS	88
GLOSSARY OF TERMS	89

ROLL OF COMMISSIONERS

1863 – 1876	-	J. DEMSEY
1876 – 1882	-	R. B. HENRY
1883 – 1884	-	W. F. FARDAY
1884 – 1888	-	F. W. KENNEDY
1889 – 1890	-	M. E. BROWN RIGG
1891 – 1892	-	F. TIMPERLEY
1892 – 1913	-	A. H. WYNDHAM GORDON
1913 – 1914	-	L. L. KERR
1914 – 1915	-	C. W. DUNCAN
1915 – 1926	-	HON. LT. COL. GODFREY
1926 – 1939	-	HON. LT. COL. DEANE. O. B. E
1940 – 1944	-	COL. S. S. DICKENS. O. B. E
1944 – 1945	-	A. M. BELL
1945 – 1948	-	LT. COMDR. HAMILTON. R. N. R
1948 – 1949	-	S. H. COOMBES
1949 – 1955	-	CAPT. O. W. JACKSON. M. B. E
1956 – 1967	-	J. M. T. B. ROSS. O. B. E
1967 – 1989	-	R. D. LUTCHMAYA
1989 – 2003	-	A. K. D. R. BHOOKHUN. P.M.S.D
2003 – 2004	-	J. SIBDOYAL. (Ag)
2004 – 2006	-	W. S. DUFF
2006 – 2010	-	L. VIJAYANARAYANAN
2010 – 2015	-	P. J. BRUNEAU. M.P.M, P.M.S.M, P.D.S.M
2016 – 2020	-	P. APPADOO. P.D.S.M
2020 – 2020	-	K.M NOBIN. P.M.S.M
2020 –	-	J.RUNGADOO (Ag)

INTRODUCTION

The Mauritius Prison Service (MPS) in collaboration with other law enforcement agencies strive to make Mauritius a safer place for all. Our main objective is to keep detainees in safe, humane custody and help prepare them for a useful life. The involvement of the civil society is very crucial towards this mission. During the year under review (2019), the Mauritius Prison Service continued to meet the challenge of caring for persons who were committed from the courts. This care related not only to their secure imprisonment, but equally important, the need to influence offenders to lead law abiding and useful lives upon release as clearly stated by our “Mission Statement”.

Unquestionably, the task of rehabilitating offenders contributed in no small way to the development of the country as it seeks to create a better; more equitable society. Working as an integral part of the Criminal Justice System, the Service has continued to be a leading correctional facility within the region. The major challenge that confronted the Service was the international economic crisis which continued to have implications for the amount of resources being made available. Nevertheless, the prison continues to perform efficiently and effectively despite these universal challenges.

Our aim is to provide the degree of custody necessary in each case to ensure that the sentence of the court is carried out, and, to attempt to modify the behaviour of the offenders so that their activities on release will be law-abiding rather than law breaking. This will be achieved by the provision of treatment and the setting up of conditions which will afford them opportunity for more successful personal and social adjustment.

Prison work can be difficult and demanding. It is a challenge for the prison to meet the needs of all detainees, which are often complex and at times not merely criminal but incorporating mental health issues, substance abuse, homelessness, family breakdown and other social issues. It can be a demanding and difficult job, requiring the constant assessment of risk, a need to be alert, knowledgeable, firm and flexible. The best combines these qualities with care and compassion. Prison staff often works without recognition and sometimes under threat, to help those people in custody to change, to become better citizens and to make a positive contribution to their community when they are released. When this is achieved, prisons make a significant contribution to the safety and security of Mauritius.

Fifteen institutions including Pointe La Geule Prison in Rodrigues are directly administered by the Commissioner of Prisons under the aegis of the Ministry of Defence and Rodrigues.

The overall performance of the Mauritius Prison Service (MPS) for the year 2020 can be deemed as a vast improvement over that of 2018. In 2019, the Mauritius Prison Service repositioned itself towards a new and more dynamic rehabilitative track. Consequently, the department is now well poised to achieve its ultimate goal of purposeful rehabilitation, operational efficiency and self-sufficiency. With a renewed emphasis in counseling offenders effectively, the conduct of needs analysis, and the identification of deficit behavior, significant progress is also being made towards engaging each offender in purposeful rehabilitation.

ORIGIN OF PRISONS

Mauritius has been colonised several times.

It has no aboriginal inhabitants. The population is of European, Chinese, Indian and African descent. Thus, it is multi-racial, multi-cultural and multi-lingual.

The Dutch made this country an agricultural colony and introduced sugarcane, tobacco and indigo. They brought convicts to assist them as labourers. It is inferred, therefore, that the origin of prison can be traced back to the Dutch settlement.

The French, too made use extensively of miscreants from European Prisons to improve the agricultural industry. In 1737, under the governorship of Mahé de Labourdonnais, law was regimented. Ever since, construction of prisons for the maintenance of law and order had gained resonance. In all the districts of Mauritius, a regional prison known as 'Le Bargne' was established.

On 3 December 1810 the English conquered the country from the French and further developed the Prisons Service. The introduction of Industrial School, Borstal Institution and Open prison are attributed to them. It can be safely placed on record that the present Prison system is an evolution of the English Penal System.

With independence, the Republic of Mauritius has developed its own identity and culture. This is also true for the Mauritius Prison Service.

MISSION, VISION, GOALS AND OBJECTIVES

Mission

We serve society by keeping detainees in a safe, humane custody and help prepare them for a useful life in society.

Vision

A Safer Mauritius through best correctional practice.

Our Goals

Keep detainees in a safe custody.

Maintain order, control, discipline and safe environment.

Provide decent conditions for detainees and meet their needs, including medical care, advice on and help with personal problems.

Provide positive regimes which help detainees to address their offending behavior and prepare them to live a full and responsible life.

Help towards rehabilitation of detainees. Provide a delivery of prison services using resources provided by Parliament with maximum efficiency.

In meeting these goals, we co-operate closely with other criminal justice agencies and contribute to the effectiveness and development of the criminal justice system as a whole.

To monitor all statutory to intramural sentences.

Our Objectives

To provide a safe and healthy environment, that is conducive to the rehabilitation and spiritual enhancement as well as vocational training of the detainees.

To facilitate and safeguard ways and means for the detainees' contact with outside world, i.e. spouse, children, parents and next of kin.

To provide the necessary structures that will be beneficial for all detainees in terms of education and vocational training.

To apprise and sensitize the detainees on the ill effects of substances abuse and to empower them so that they may lead a drug-free life.

To provide the detainees with all the required structures for their mental and physical development through sports and games and to continuously upgrade and rethink the existing physical structures of the prison so that they may be congruent with a healthy and peaceful environment.

STRATEGIC DIRECTION

The Strategic Plan 2013-2023 was worked out with the collaboration of the United Nations Office on Drugs and Crime (UNODC). It was developed as it provided an insight for prisons to introduce better and more modern practices. Taking into consideration the different constraints and challenges facing the MPS, the aim of this Strategic Plan has been to devise ways and means to improve prison performances over time. Its purpose is to introduce best correctional practice that fit the Mauritian context. The plan is a road map that points the direction and sets target to reduce recidivism. Six main areas of reform were identified and were categorized as here-under:



As at now, for the successful implementation of the plan, it is imperative to have effective teamwork as well as internal and external partnerships. To this end, two goals of the six main pillars have already been completed namely the Strategic Planning & Research Unit and the Operationalising of the Eastern High Security Prison. Each pillar is being monitored by a team of prison staff under the direct responsibility of a Deputy Commissioner of Prisons.

Strategic Planning and Research Unit

The Strategic Planning and Research Unit which was established in 2013 as one of the pillars of the Strategic Plan 2013-2023 and which is headed by an Assistant Commissioner of Prisons, is responsible to conduct research and analyze data for emerging trends in prisons across the world. It also provides accurate advice to senior management team to better support decision making for the planning of infrastructure, services and the formulation of policy proposals. It also organizes meetings with internal and external stakeholders and technical people to assist in the implementation of projects in the different units. In order to be proactive in the execution of its challenging duties, the MPS is bound to develop mechanisms to ensure that resources are developed optimally. The Planning Unit has the responsibility to constantly monitor, supervise and report to Senior Management matters pertaining to the effective and efficient use of resources at the MPS. It has a good documentation system to record all progress of work pertaining to different institutions.

Integrated Detainee Management

On the 31st of December 2019, the Mauritius Prisons Service accommodated 2483 adult detainees (*Males and Females including Foreigners*) in Mauritius and 37 detainees (*Males and Females*) in Rodrigues. The coming into operation of Eastern High Security Prison in 2014 has provided modern prison accommodation and an opportunity to introduce improved detainee management systems as well as review and rationalize the utilization of the prisons facilities. The management of detainees has remained basically unchanged with prison officers largely performing a traditional “turnkey” role. This is not to underestimate some important rehabilitative services and recent innovations particularly the development of a new induction system and the Enhanced Earning Scheme. The Mauritius Prisons Service has long had the aim of rehabilitating detainees and has a number of specialist staff to provide a range of education, training skills, welfare services, along with non-government organizations that provide rehabilitative programmes and service. However, the great majority of prison officers’ roles is focused on security and supervision and is not engaged in the rehabilitative aims of imprisonment. The aim is to instil a positive respectful relationship between staff and detainees using an integrated system of managing detainees that focuses upon protecting the community by reducing re-offending. This has been achieved by developing a training curriculum for prison officers to support the implementation of an Integrated Detainee Management System that addresses all the identified challenges by incorporating the following key components: **(1)** First night strategy **(2)** Reception and induction **(3)** Risk Assessment Tool **(4)** Programmes **(5)** Case Management **(6)** Unit Management **(7)** Sentence and Release Planning.

Rehabilitation and Resettlement

Cognitive Behavioural Programmes should become the key focus for reducing the rate of re-offending. Most detainees have a low educational and employment background and many have poor physical and mental health. There is a high incidence of drug abuse and HIV and other infections. It is obvious that many of these detainees come from the most vulnerable group in society. There are many challenges being faced to reduce re-offending but in the long run, the following measures are being taken into consideration:

- To create more space for activities and workshops with expanded vocational opportunities in tune with demand on the contemporary work market thereby enhancing detainee's employability upon release;
- To establish a pre-release plan for each detainee; and
- To establish a comprehensive and coordinated resettlement support services through a coordinating body involving Government and Non-Government Organizations (NGOs).

Looking to the future, and the implementation of the Mauritius Prisons Service Ten-year Strategic Plan 2013-2023, especially the Rehabilitation and Resettlement Pillar, partners will have to ensure that all opportunities are seized to deliver positive results for detainees. Practical, intelligent and innovative approaches to managing the complex needs of detainees will help ensure that the community is protected, crime is reduced and vulnerable people, especially women, are not victimized in society.

Improved Security

Security and safety are the primary concerns of prison systems. Thus, prison staff must constantly be on alert to calculate and minimize a multitude of potential risks to security. These include but are not limited to the risks of: escape; detainee violence and bullying; self-harm and suicide; illicit drug use, infection, and many more. In broad terms, security takes three forms:

- **Physical security** includes architecture of the prison buildings, the strength of the walls of those buildings, the bars on the windows, the door of the accommodation units, the specifications of the perimeter walls and fences, watchtowers and so on.
- **Procedural security** relates to security processes and procedures which have to be followed such as searching, counting and supervision and control.
- **Dynamic security** is a concept and a working method by which staffs prioritise the creation and maintenance of everyday communication and interaction with detainees based on high professional ethics. It ensures that there is sufficient purposeful and meaningful activity to occupy detainees.

When physical and procedural security is at their highest level they are extremely costly to run and might be interpreted as being oppressive and inhumane for detainees. If security and safety are absent, detainees can quickly become violent and dangerous. Consequently, it is important to have a range of prisons that have been constructed and rated to varying levels of security. In Mauritius as in most countries, prisons are designed to satisfied four levels of physical security:

- (i) **High security**
- (ii) **Maximum security**
- (iii) **Medium security**
- (iv) **Minimum security**

Ideally, detainees should be individually assessed for the level of risk they pose and be matched and placed into prisons with an appropriate security rating.

To this end, the following have been taken into consideration to improve security: -

- (i) The construction of Melrose Prison has provided a respite to overcrowding.
- (ii) Regular security audits (that build upon the security audits previously sponsored by UNODC) in all prisons will help to reduce the security risk arising from the deterioration of the prison conditions.
- (iii) A search strategy to detect prohibited articles such as mobile telephones and drugs by making increased use of new technologies.
- (iv) Trial of security classification tools for detainees by making use of modern techniques to ensure that detainees are classified to the lowest level of security appropriate to their circumstances.
- (v) Prison security ratings – to ensure that each prison is appropriately rated in terms of its security as high, maximum, medium or minimum security.
- (vi) Standard Operating Procedures (SOP) should be developed for the proper management of prisons.

Operationalising Eastern High Security Prison

The Eastern High Security Prison was inaugurated on 20th of March 2014 and became into operation on the 27th of March 2014 and it has reached its cruising speed as a fully functional high security prison. It consists of three cell blocks, five dormitory blocks, high security special units, a geriatric block, educational facilities, a segregation dormitory block, works complex, staff facilities, administrative block, religious facilities, and kitchen and service yards. It has the capacity to accommodate 750 to 1000 male detainees especially those undergoing long sentences.

Capacity Building

Capacity Building is an important feature in any organization. The quality of service delivered depends on how human resources are recruited, managed and trained. In order to achieve the mission of the Mauritius Prisons Service, human resources are being managed efficiently and responsibly and attention given to capacity building of staff. To address this problem, the following has been taken into consideration:

- (i) Capacity building for Line managers has been put in place to ensure that leadership and competent management experience is available to provide future leadership to the organization.

- (ii) Mauritius Prisons Service training curricula responds to adequate best correctional practices. The Prison Training School presently offers a range of training package for the benefit of all grades of officers. The existing curricula also include such modules as interpersonal skills, Unit Management, Case Management, Equal Opportunities and Non-Discrimination, Suicide Prevention, Fire Safety Awareness, Gender Awareness, Sensitization against Drug Abuse, and Sentence Planning amongst others. Besides the assistance of Mauritius Civil Service College is sought for the training of officers at all ranks. The Mauritius prison training school is ISO Certified.

Evaluation of Strategy

Periodic evaluations of strategies, tactics, and action programs are being carried out:

- 1) To assess success of the strategic planning process.
- 2) To evaluate the effect of specific actions on long-term results.
- 3) To consider any changes or events that may have impacted the desired course of actions.

Review of the Strategic Plan

The ten year strategic plan is expected to reach its target by 2023. Prison management will work on a new plan.

STRATEGIC PLANNING AND RESEARCH UNIT

The Strategic Planning and Research Unit which is under the charge of an Assistant Commissioner of Prisons was operational in 2013 under the first pillar of the ten-year Strategic Plan 2013-2023. The Plan was developed by a dedicated team of officers under the close supervision of a UNODC Consultant and it focuses on the following areas of concern:

1. To assist management in policy decisions and project formulations
2. To assist management in decision-making by providing a good information system to support an effective prison management system which benchmarks on world best practices.
3. To address Issues related to legislation, human rights, modern risk management, modern actuarial risk and classification models, credible alternatives to imprisonment, modern concepts of rehabilitation, negative impact of short sentences on cost of imprisonment, effectiveness of the Parole System, long period of remand, high rate of re-offending.
4. To conduct research and analyze quantitative and qualitative data for emerging trends in prison management and related social sciences and provide accurate advice to senior management team to better support decision-making for the planning of infrastructure, services and formulation of policy proposals across the criminal justice system.
5. To monitor the implementation and progress of the e-prison system.

Projects undertaken at the Planning Unit since its establishment are listed below:

1. Implementation of a Quality Management System ISO 9001:2008 at New Wing Prison Induction Unit in 2013 and maintenance of same as per legal requirement.
2. Implementation of an e-prison system with the collaboration of the Government of India in 2013. Phase 2 of the project is now at the implementation stage.
3. Compost production at Petit Verger Prison with the collaboration of the University of Mauritius under the Sustainable Waste Management Practices Initiative and funded by the United Nations Development Program in 2013/2014. The project was presented at the Public Service Excellence Award organized by the Ministry of Civil Service and Administrative Reform in 2014 and was awarded the prize of Grand Winner in the category of Government Departments.
4. Writing of procedures.
5. Rainwater harvesting in four prisons.
6. Implementation of a Quality Management System ISO 9001:2008 at the Prison Training School in 2016 and maintenance of same as per legal requirement.
7. Writing of draft amendments to the Reform Institutions Act and Prison Regulations.
8. Providing inputs for Parliamentary Questions and for the preparation of the National Report for submission to the relevant committees of the United Nations Human Rights Council.
9. Migration of ISO 9001:2008 to the new version of ISO 9001:2015.
10. Facilitating the realization of the goals of the organization in line with its strategic direction, that is the other five pillars of the Strategic Plan 2013-2023.
11. Interacting with regional and international professional organizations to benchmark with best practices.
12. Implementation of the Prison Inspectorate Mechanism and the Prison Emergency Management Plan.
13. Conducting visits in different prisons to monitor and evaluate implementation of projects and policies.

OPERATIONAL STRUCTURE

The Mauritius Prison Service was established under the **Reforms Institution Act of 1988**.

The Commissioner of Prisons is accountable to the Honourable Prime Minister, Minister of Defence, Home Affairs and External Communications, Minister for Rodrigues, Outer Islands and Territorial Integrity.

The following documents are adhered in managing prisons :

- (i) Constitution of the Republic of Mauritius;
- (ii) Reforms Institution Act 1988;
- (iii) Prison Regulations;
- (iv) Bail Act;
- (v) Courts Act;
- (vi) The Judicial and Legal Provision Act 2018
- (vii) Standing Orders;
- (viii) Commissioner of Prison's Circular;
- (ix) Standard Operating Procedures;
- (x) Customer Charter;
- (xi) Code of Ethics for Prison Officers;
- (xii) MPS Anti-Corruption Policy;
- (xiii) United Nations Convention on Human Rights (UNCHR);
- (xiv) Optional Protocol to the Convention against Torture (OPCAT);
- (xv) UN Standard Minimum Rules for the treatment of prisoners (Nelson Mandela Rules);
- (xvi) Standard Minimum Rules for the Administration of Juvenile Justice (Beijing Rules);
- (xvii) Conventions and Treaties relating to Transfer of Prisoners; and
- (xviii) The Juvenile Offenders Act

ORGANIGRAM - BADGES OF RANK

Commissioner of Prisons



Deputy Commissioner of Prisons



Assistant Commissioner of Prisons



Superintendent/Senior Superintendent of Prisons



Assistant Superintendent of Prisons



Senior Officer Cadet



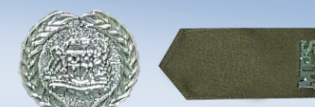
Principal Prison Officer



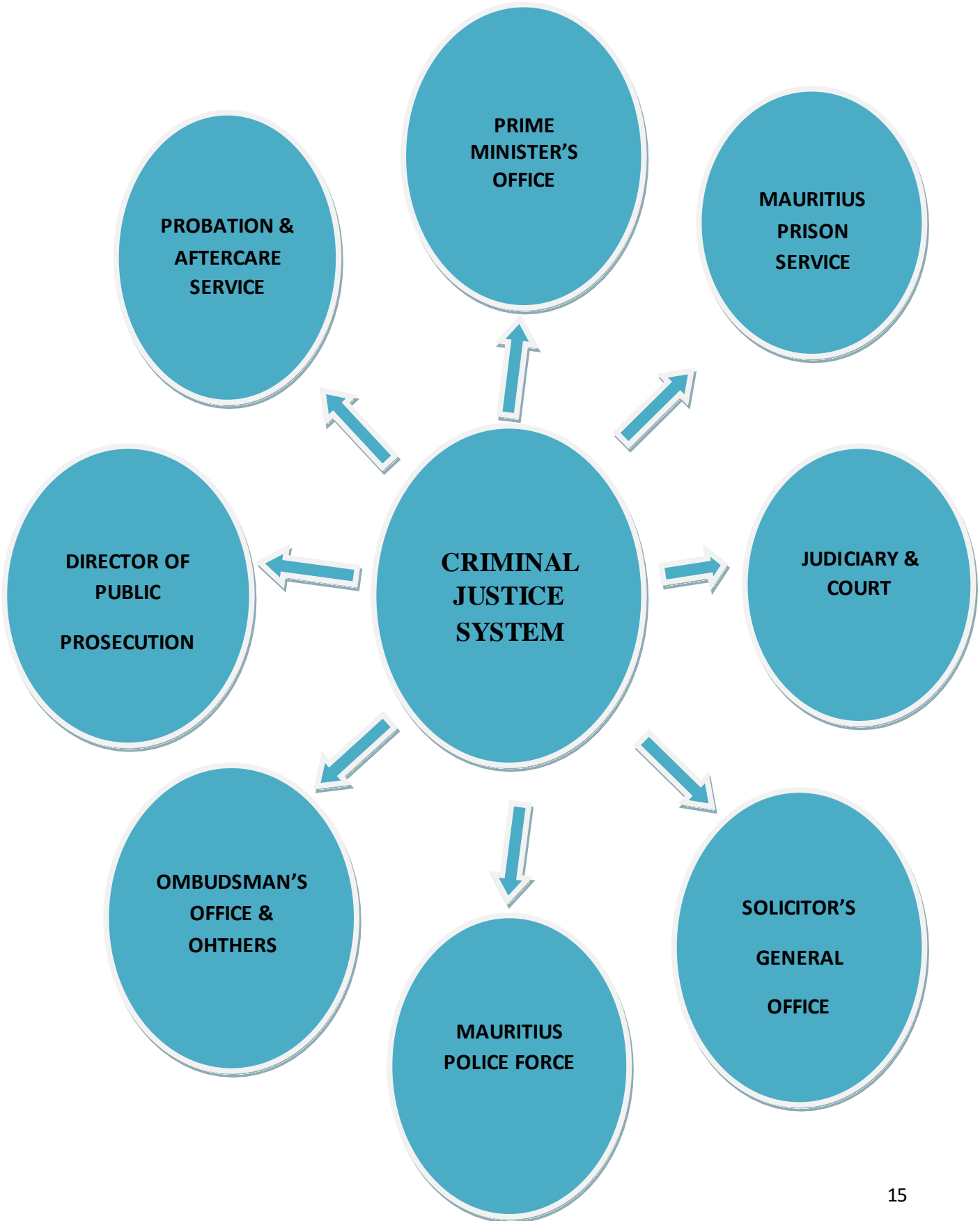
Lead Prisons Officer



Prison Officer/Senior Prison Officer



ORGANIGRAM – CRIMINAL JUSTICE SYSTEM



GENERAL OVERVIEW

The Mauritius Prisons Service comprises of **15 institutions** including one in Rodrigues (*the 10th District of Mauritius*) as well as Correctional Youth Centres Boys/Girls and Rehabilitation Youth Centres Boys/Girls.



Central Prison Beau Bassin (BBP)

The Central Prison Beau Bassin is a maximum security prison which came into operation on the 1st May 1887. It has a current accommodation capacity of 1295 detainees and houses mostly remand detainees.

All detainees accommodated at BBP benefit from educational, vocational, recreational, rehabilitative and spiritual facilities.

However, given that a significant percentage of the prison population are sentenced or remanded for drug related offences, the monitoring of drug abusers became an important component of rehabilitation programs.

Towards this end, the Lotus Centre continues to build the coping capacities of illicit drug dependent detainees through provision of multi-disciplinary life skills programmes.

They are also exposed to Methadone Substitution Therapy and antiretroviral treatment.



New Wing Prison (NWP)

The New Wing Prison is a medium security institution. Situated at the back of beau basin prison, the said institution came into operation on 6th March 2003 and since April 2006; it started accommodating detainees selected to perform outdoor labour.

This institution accommodates mostly remand detainees and has a maximum bed capacity of 357 detainees.

All newly admitted detainees (*Remanded / Convicted by Court*) are kept at New Wing Prison to undergo the induction process during which they undergo a complete medical screening and are interviewed by a panel comprising of senior staff, hospital staff and welfare officers or prison psychologist. In addition they are informed about their rights and privileges, their responsibilities the prisons rules and regulations, the prison regime etc.



Women Prison (WP)

The Women Prison is a Maximum Security prison catering for both remand and convicted adult female detainees. It is located adjacent to the Beau-Bassin Central Prison.

It became operational on the 11th May 1951. The institution can accommodate up to 146 female detainees.

Female detainees are allowed to keep with them their children up to the age of 5 years. Day care facilities are available for children under the care of NGOs.

Detainees are provided training in Pastry, Beauty Care, Basket and Rattan Wares, Garment Making, Embroidery and Vegetable Cultivation/Bio Farming.



Grand River North West Remand Prison (GRNWRP)

The Grand River North West Remand Prison is a Maximum Security Prison. It became operational on 3rd July 1995. It has a maximum accommodation capacity of 384 detainees and houses mostly remand ones.

Some convicted detainees who have been selected for labour in the Prison Kitchen and cleaning are also detained there. Being given that most of the detainees housed at the institution are remand ones, only recreational and spiritual facilities are provided to them.



Petit Verger Prison (PVP)

The Petit Verger Prison (PVP), a medium security prison is located at Pointe Aux Sables found in the district of Black River. The institution came into operation on 16th February 1982 and has an accommodation capacity of 308 detainees.

Convicted detainees nearing their date of release with no pending cases and those of good behaviour/conduct are eligible to be transferred to this institution.

Detainees accommodated at PVP are provided training in Gardening, Pastry, Food production, Livestock Rearing, Sheet Metal Works, Block Making, Builders and

Constructions, Tailoring and Carpentry. The Templin Training Centre found at the institution dispenses courses under the aegis of Mauritius Institute of Training and Development (MITD) in welding & metal fabrication and wood trade.



Richelieu Open Prison (ROP)

Richelieu Open Prison came into operation on the 02nd October 1958. It is characterized by the absence of physical structures and by a system based on self discipline and on a sense of responsibility which the detainees show towards the group in which they live.

Offenders whether committed for long term and reaching the end of their sentence or short term Imprisonment, are eligible for the transfer to the institution subject to a positive report on their conduct and behaviour.

Accommodation is available for 198 detainees who live in four dormitories. The Open condition of the institution allows detainees the privilege of having contact visit with their relatives.

Detainees are provided training in agricultural work and animal rearing as well as vocational work and industrial activities which has proved to be beneficial towards their eventual release. The multi-skilling programme, be it, in vegetable production, animal husbandry, shoemaking, printing, layers and metal workshop pave the way for the rehabilitation of detainees. Mauritius Prison Service is at present 100% self-sufficient in eggs due to egg production in the institution.



Correctional Youth Centre (CYC) Boys

The Correctional Youth Centre Boys previously known as Borstal Institution became operational on 30th June 1987. It can accommodate up to 50 juveniles. It caters for young offenders up to the age of 18 and is situated at Corner Sir Francis Herchenroder and Pope Hennessy Street, Beau Bassin.

The system of training aims at strengthening character and is based on progressive trust, demanding increasing personal decisions, self responsibility and self control.

The Correctional Youth Centre also provides facilities to juveniles to follow educational and vocational training. Likewise, the inmates also benefit from religious facilities. Lately some of the juveniles had the opportunities to follow courses with SOFAP and FAREI where certificates were awarded to them as well.



Open Prison for Women (OPW)

The Open Prison for Women was built on a plot of land of approximately 11902 square metres located at Barkly near the Correctional Youth Centre for boys. The institution was inaugurated on 10th December 2015 and is classified as minimum security. It has a maximum accommodation capacity of 18 detainees.

Detainees are transferred from Women Prison to Open Prison based on good behaviour and after having served at least half of their initial sentence.



Barkly Special Prison for Women (SPW)

Barkly Special Prison for Women is a maximum security prison which started operating as from 09th January 2020. It can accommodate 12 detainees.

Women detainees committing aggravated prison defaults at Women Prison are temporarily segregated there. It is also used as a Segregation Unit for high risk women detainees.



Correctional Youth Centre (CYC) Girls

The Correctional Youth Centre for girls also situated at Barkly Beau Bassin keeps in safe custody female offenders up to the age of 18 years. The institution can accommodate up to 14 Juveniles. It provides opportunities for juveniles to follow educational and vocational courses along with religious facilities.



Rehabilitation Youth Centre (RYC) Boys

The Rehabilitation Youth Centre Boys is situated at Barkly, in the same compound of the three other centres mentioned above. This institution caters for male juveniles up to the age of 18 years old. They are engaged on educational and recreational activities.



Rehabilitation Youth Centre (RYC) Girls

The Rehabilitation Youth Centre Girls is situated in the same compound of the three other centres mentioned above. This institution caters for female juveniles up to the age of 18 years old. They are engaged on educational and recreational activities.



Eastern High Security Prison (EHSP)

Eastern High Security Prison was built to combat the overcrowding in our institutions in line with strategic plan 2013-2023. It is a modern facility institution which has been built on 37 acres of land situated at Melrose, in the district of Moka.

Eastern High Security Prison was inaugurated on 20th March 2014 and is characterized as a high security prison. It has a maximum bed capacity to accommodate 922 detainees, mostly convicted ones.

Detainees are engaged in vocational, recreational, educational and spiritual activities.



Phoenix Prison

Phoenix High Security Prison, also known as “La Bastille” is situated at Phoenix and is classified as a high security prison. It became operational on 10th December 1980 (*following Prison mutiny of 1979*) and accommodates a maximum of 26 detainees.

However, the institution was closed down on 27th May 2014 and all its detainees were transferred to Eastern High Security Prison.

Nevertheless, the said institution started re-operating on **29th March 2018**.

Detainees who are considered a potential threat to security, who commit serious and aggravated breaches of prison discipline and who have previously escaped from prison or other legal custody are transferred therein as a deterrence.



Rodrigues Prison

Rodrigues Prison is a medium security facility located at Pointe la Gueule, Rodrigues. It was proclaimed on 05th December 1963, it covers an area of sixteen (16) acres of land. It caters for 75 detainees male including 12 female detainees.

The Rodrigues Prison is under the direct supervision of the Island Chief Executive, Rodrigues. The general administration is, however, under the supervision of the Commissioner of Prisons.


STATISTICS
ISLAND OF MAURITIUS**(MALE & FEMALE ADULT CONVICTS INCLUDING JUVENILE AT CYC)****OVERALL REVIEW**

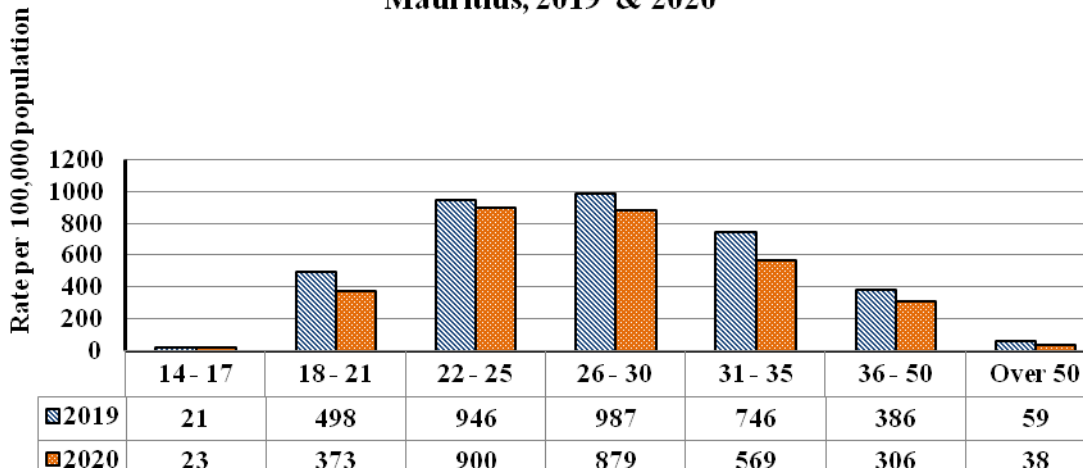
- (i) In 2020, there were 3,294 adult and juvenile convicts admitted to prisons, representing an increase of 14.3% over the figure of 3,843 in 2019. Out of these 3,294 convicts, 97.3% were males and 2.7% were females. The number of admission for juveniles increased from 15 in 2019 to 17 in 2020. It is to be noted that among the 17 juveniles admitted in 2020, all were males.
- (ii) Out of every 100 detainees in prison, 44 were convicts and 56 were on remand and awaiting trial.
- (iii) From 2019 to 2020, the daily average remand and trial population for adults increased by 12.2% from 1,320 to 1,482 and the number of juveniles was 27 for 2019 and 29 for 2020 respectively.
- (iv) In 2020, the average prison occupancy level for all detainees was 70.7%, with the highest occupancy level being 78.6% and the lowest 67.1%. The capacity for male and female juvenile was 57 with an average of 26 juvenile inmates.
- (v) Nearly 99.6% of the admissions of convicts were Mauritians in 2020. There were 13 foreigners (13 adult males).
- (vi) **During the year 2020, through the Transfer of Prisoners Act, one detainee was transferred to his country of origin to serve the remaining part of his sentence**

<u>SN</u>	<u>Nationality</u>	<u>Number of detainees</u>	
		<u>Males</u>	<u>Females</u>
1	French	1	-

SNAPSHOTS ON ADMISSIONS OF CONVICTS

- (i) From 2019 to 2020, the number of male convicts admitted decreased by 15.9% from 3,715 to 3,205 and that for female decreased by 43.8% from 128 to 89.
- (ii) The admission rate per 100,000 Population was 308.4 in 2020 with 609.6 for males and 16.4 for females (Figure1). The admission rate was prominent at the age group 22-25 years for 2020 and at the age 26-30 years for 2019
- (iii)

Figure 1 - Admission rate of convicts by age group, Island of Mauritius, 2019 & 2020



- (iv) In 2020, the distribution of the admission for males by age group shows a peak at the age group 26-30 years and for females at the age group 36-50 years. (Fig 2&3).

Figure 2 - Admission of males by age group, Island of Mauritius, 2020

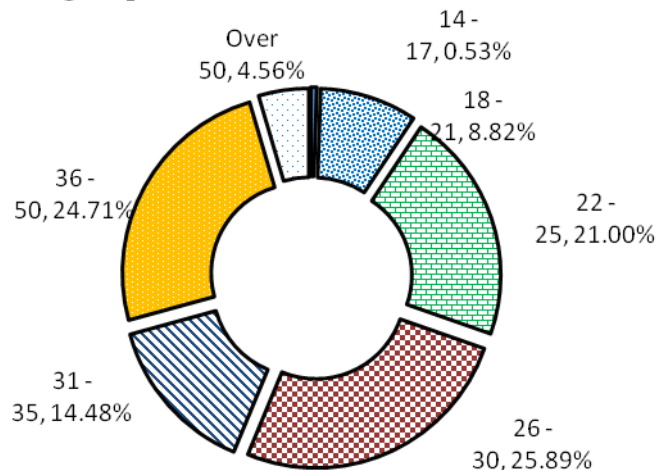
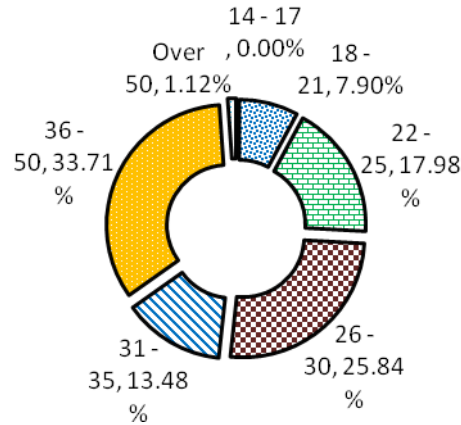


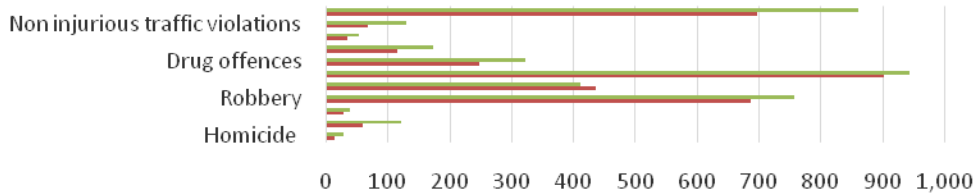
Figure 3 - Admission of females by age group, Island of Mauritius, 2020



(v) From 2019 to 2020, a decrease in the number of admissions were mainly due to fall in the admissions for the following offences (robbery from 757 to 688, burglary from 437 to 412 , theft from 925 to 744, assault from 160 to 122, homicide from 28 to 14). There was 23% decrease in admission for drug offences from 322 to 248 and the number of admission for violence and sexual exploitation decreased from 39 to 28 the two periods.

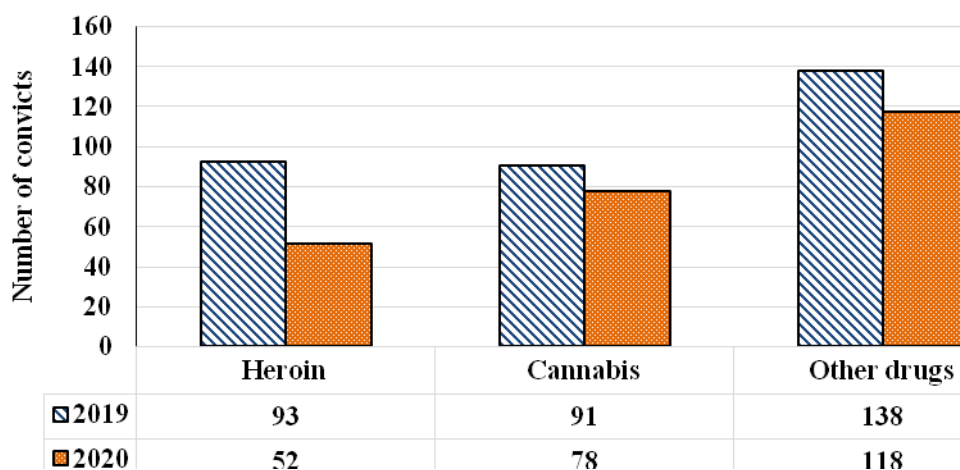
(vi). For the same period, the admissions for drug offences related to heroin decreased by 44.1% from 93 to 52. Those related to cannabis decreased by 14.3% from 91 to 78 (Figure 5). Some 79.5% (198) of the 248 admissions in 2020 were due to the possession of drugs (Figure 6). It is to be noted that there was no admission for drug offences among juvenile inmates in 2020.

Figure 4-Admission of convicts according to Un classification of offences, Island of Mauritius 2019 & 2020

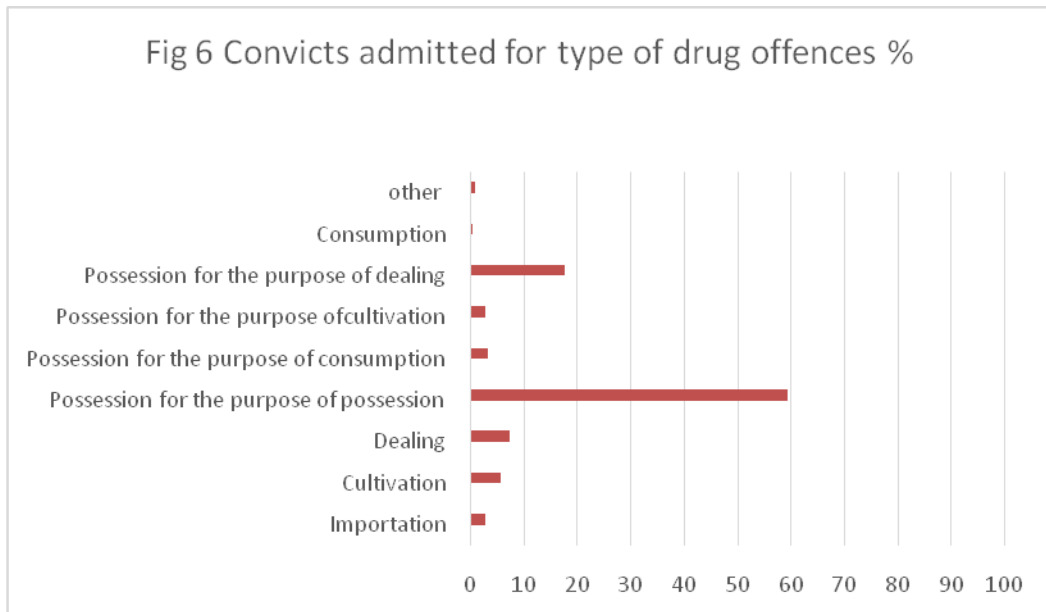


	Homicide	Assault	Sexual violence and sexual exploitation	Robbery	Burglary	Theft	Drug offences	Fraud deception or corruption	Rogue and vagabond	Non injurious traffic violations	Other offences
2019	28	122	39	757	412	944	322	174	54	130	861
2020	14	60	28	688	437	903	248	115	35	69	697

Figure 5 - Admission of convicts by type of drug offences, Island of Mauritius, 2020

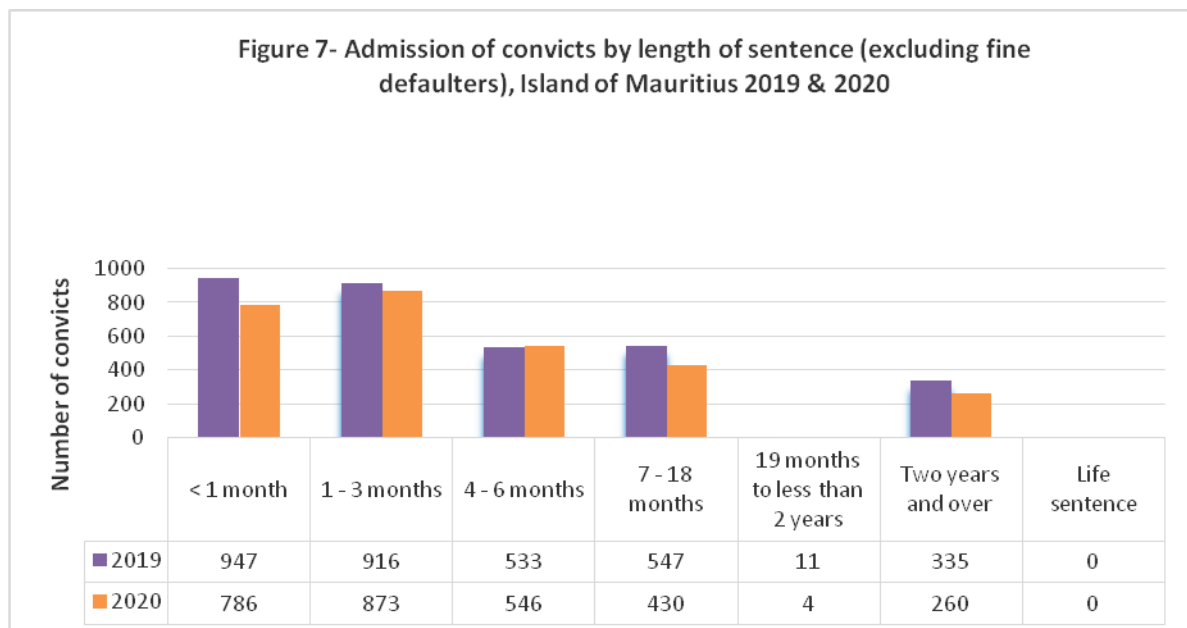


Admission of convicts by type of drug offences 2020	Importation	Cultivation	Dealing	Possession for the purpose of possession	Possession for the purpose of consumption	Possession for the purpose of cultivation	Possession for the purpose of dealing	Consumption	other	Total
No	7	14	18	147	8	7	44	1	2	248
%	2.8	5.6	7.3	59.3	3.2	2.8	17.7	0.4	0.8	100.0



(ix) The adults convicts, with no previous imprisonment, decreased by 29.6% from 1,176 (1115 males and 61 females) in 2019 to 907 (861 males and 46 females) in 2020. On the other hand, the adult convicts, who were readmitted to prison, decreased by 11.9%, from 2652(2,585 males and 67 females) in 2019 to 2,370 (2,327 males and 43 females) in 2020 without considering any observation period for the admissions.

(x) Compared to 2020, the number of convicts with short sentences of less than one month decreased by 17.0% from 947 to 786 in 2020. Similarly, those sentenced for 1-3 months decreased by 4.7% from 916 to 873. Those with long sentence of two years and over show a decrease of 22.4% from 335 to 260. It is to be noted that no convict was sentenced to life imprisonment in 2020. Excluding fine defaulters, some 56.8% of all the admissions of convicts in 2020 were condemned for short sentences of three months and less (Figure 7).



From 2019 to 2020, the number of fine defaulters admitted to prison decreased by 31.8% from 554 (536 males and 18 females) to 378 (369 males and 9 females). The admissions due to non-payment of fines of Rs 30,000 or less also decreased by 33.9% to 357 in 2020 from 540 in 2019.

RELEASE ON PAROLE, DISCHARGE, BAIL (CONVICT DETAINEES)

- (i) From 2019 to 2020, the number of convicted detainees who were discharged from prison after having served their sentences decreased by 19% from 2733 convicted detainees (2638 males, 80 females & 15 juveniles) to 2215 convicted detainees (2137 males, 63 females & 15 juveniles).
- (ii) 18 male convicts and no female convicts were bailed out in 2020 against 33 males 0 female convicts in 2019.
- (iii) No detainee convict was released on Parole in 2020 and 2019.
- (iv) No debtors were admitted to Beau Bassin Prison in 2020 and 2019.

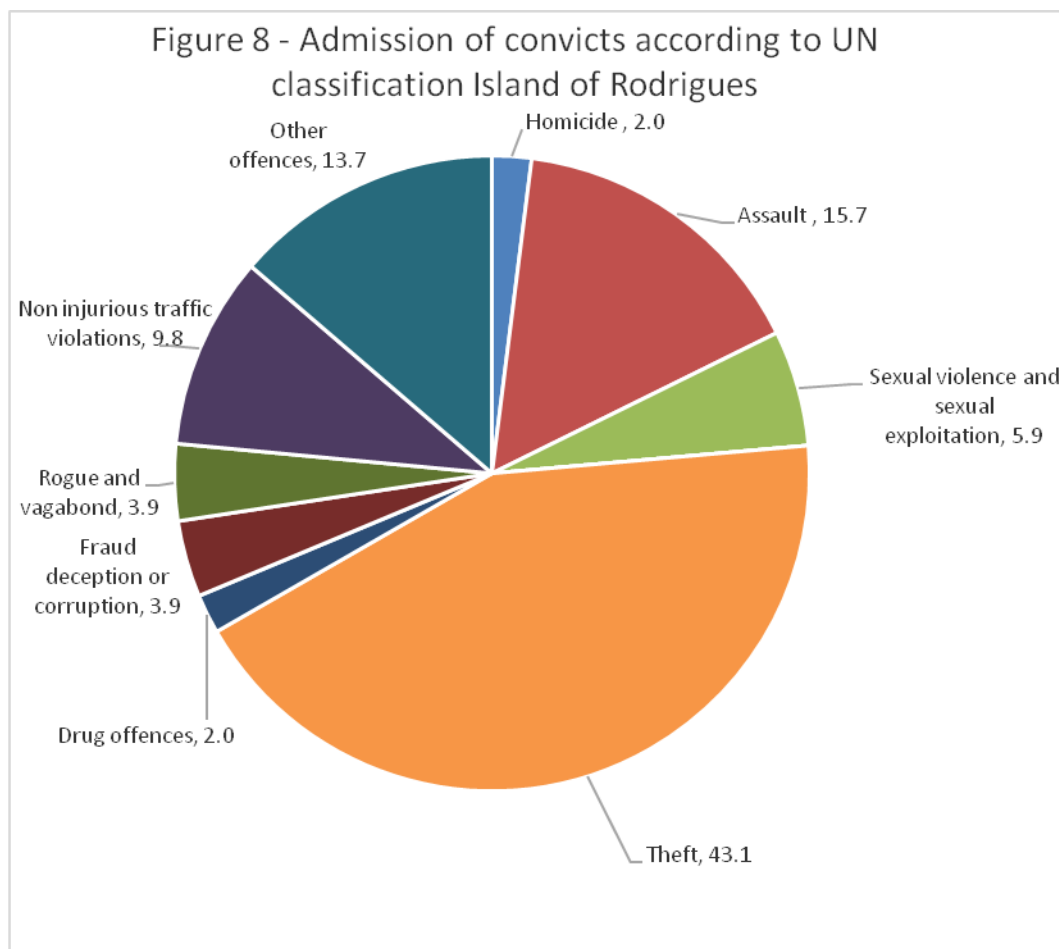
REMANDS

- (i) From 2019 to 2020, the number of detainees remanded to prison showed an increase of 1% from 4864 (4448 males, 272 females and 144 juveniles) to 4,811 detainees (4,425 males, 244 females and 142 juveniles).
- (ii) In 2020, 19 foreign nationals (13 males and 6 females) were remanded to prison against 119 foreign nationals (95 males and 24 females) in 2019. It is to be noted that there was no juvenile of foreign national for the both years.

ISLAND OF RODRIGUES

An overview for year 2020

- (i) The average prison occupancy level for all detainees was 66.7%.
- (ii) Some 29.4% of the admitted convicts aged 25 years and less, another 31.4% between 26 and 35 years, another 33.3% between 36 and 50 years and the rest above 50 years.
- (iii) There were 43.1% of the admissions related to theft 15.7% to assault, 3.9% to rogue and vagabond. There was 2.0% of admission related to drug offences. Some 37.3% were due to admissions for other offences.
- (iv) Some 43.1% (22) of the 51 admitted convicts had no previous imprisonment whereas 56.9(29) had been imprisoned more than once in the past. 23.5% (12) were sentenced for short sentence of three months and less whereas 41% (21) for long sentence of two years and over.
- (v) There were 2 fine defaulters admitted to prisons, both were due to non-payment of fines up to Rs 30,000 and less.



PRISON HEALTH CARE SERVICE

Introduction

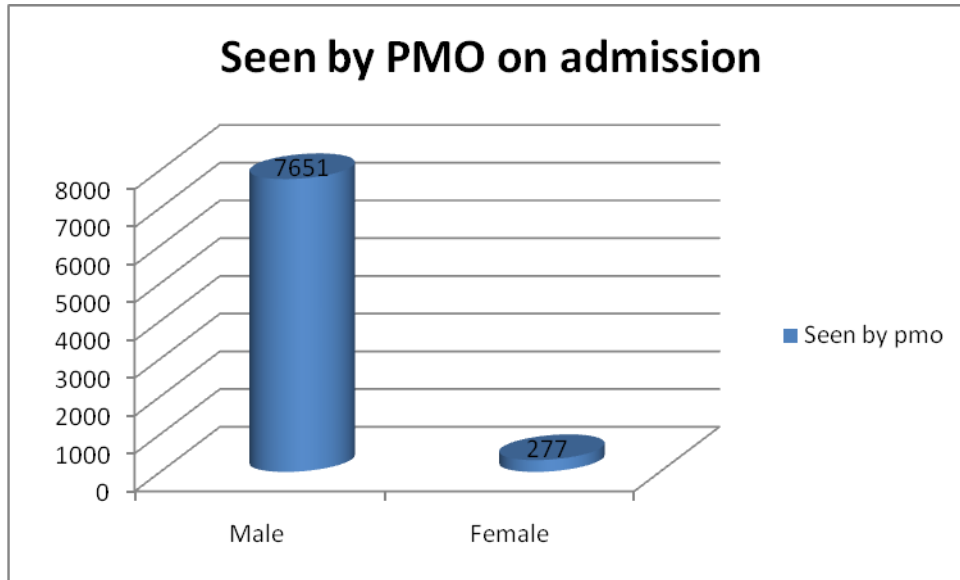
The health care of prisoners is an integral and essential part of every prison's work. Primary care is the foundation of prison health services. It is the most effective and efficient elements of health care in any public health system and, as such, should be available to every prisoner. Prisoners have the same right to health care as everyone else in society.

The purpose of health care in prison is the same as outside prison. The care of patients is its core function and its main activities are clinical. A full primary care service also includes elements of disease prevention and health promotion.

There are several health facilities that have been put in place in the Mauritius Prison Service to assess, diagnose and maintain detainees' health. Medical examination carried out on the day of admission of the prisoner. Its main purpose is the early detection of critical health conditions which might require immediate measures to protect the health of the new inmate and in cases of transmissible diseases, to protect the health of the prison population.

As with primary care in the community, there are secondary duties. Prison health professionals may also occasionally carry out other duties and services. They may provide reports to the courts, reports for when the early release of a prisoner is being considered on general or specific health grounds and even carry out rehabilitations program for detainees.

For year 2020 a total of 7651 male and 277 female detainees has been admitted in prison. All detainees are examined and screened for various diseases, like HIV/Aids, VDRL, TPHA, hepatitis B and C, by Prison medical Officer. The chart below represents the number of detainees seen by Prison medical Officer on admission.



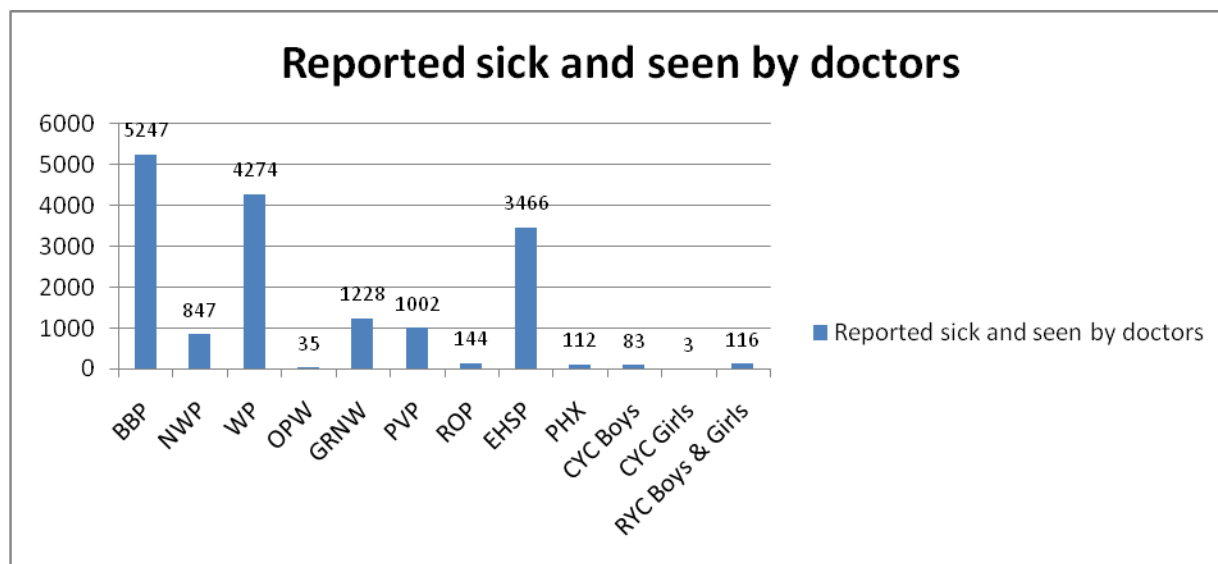
Health Infrastructure

All institutions have a health care section to dispense care and treatment to detainees and officers. Institutions namely G.R.N.W.P, P.V.P, R.O.P, O.P.W, S.P.W, CYC and R.Y.C boys and girls, have a dispensary which are operational from 08 00 hrs to 15 30 hrs.

In addition, Beau Bassin Central Prison and the Eastern High Security Prison are equipped with an inpatient ward which can accommodate between 15 to 20 patients, whereas Women Prison medical complex can only accommodate 3 patients.

However during weekend, public holidays and night, hospital officer from Beau Bassin Central Prison are called upon to attend to any emergency in dispensaries male section, and hospital officer from the Women Prison medical complex to attend to emergency at O.P.W, S.P.W and CYC Girls, RYC Boys and Girls.

Table below illustrate in detail the number of detainees who reported sick and has been examined by prison doctors in different institutions.



Jawaharlal Nerhu Hospital - Prison Ward

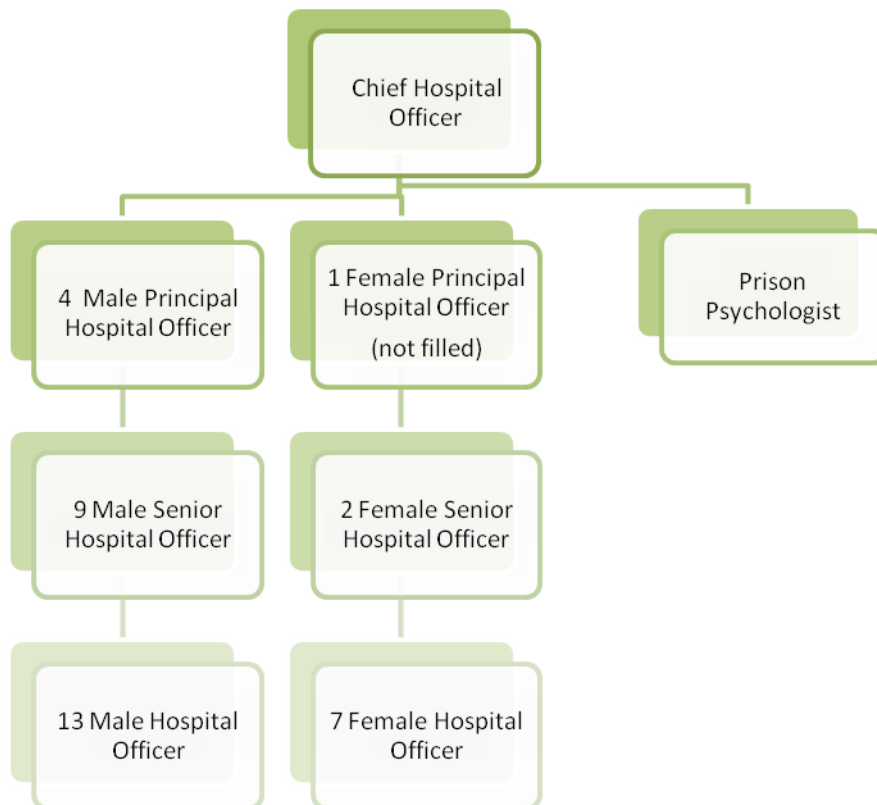
Detainees requiring admission, surgical interventions or any specialized care and treatment are referred to Jawaharlal Nerhu Hospital- Prison Ward. The prison ward can accommodate up to 9 male and 5 female patients. During the same year 214 male and 43 female detainees were admitted thereto compared to 193 admissions for year 2019.

Medical and Para Medical Staff

The prison health care team, actually, comprises of 37 qualified nurses including 8 female nurses. Four doctors and one dental surgeon, seconded from the Ministry of Health and Quality Wellness. Two Nursing Officers are employed on a contract basis (up to January

2021), funded by the Global Fund, to run the Prison Methadone Induction Unit, additional, one Prison Psychologist providing psychological clinic in all prison institutions.

ORGANIGRAM OF THE PRISON HEALTH SECTOR



Health Care Services

Visiting specialist/consultant attended to detainees

Medical officers provide a round the clock service to detainees and prison staff, as well as to family of staff.

To improve the physical and mental health of detainees arrangement has been made with the Ministry of Health and Wellness to provide specialised clinic at prison level. Specialists in the field of Psychiatry, Orthopaedic, medical and surgical attend to detainees at the medical unit Beau Bassin and EHSP on a monthly basis. However, E.N.T, Dermatologist and Aids Physicians provide weekly follow-up services.

Vaccination

In collaboration with the Ministry of Health and Wellness and the National Vaccination Centre, several vaccination sessions: against measles, H1N1& flu vaccine has been put in place to reduce risk of epidemic in the Mauritius Prison Service among inmates; they also provide Information, Communication and Education (I.C.E) campaign.

Prison Methadone Unit

Detainees who enter prison while currently enrolled on a community methadone maintenance program continued their treatment during the period of their incarceration. Methadone is being dispensed in 6 institutions: NWP, BBP, WP, PVP, PHX and EHSP, with the help of pharmacy dispenser from the Brown Sequard Mental Health Care centre.

However, a methadone Induction Unit has been set up at the Central Prison since December 2011 for inducing and dispensing of methadone to eligible substance abusers. The program form part of an integrated approach to the management of drug issues which includes case management and access to available psychosocial services, health services, and drug and lifestyle education programs. Eligible detainees at high risk to Opioid-related harm in prison have an opportunity to start methadone treatment while in prison. Doctors from the Harm Reduction Unit of MOH & Wellness attend the clinic on a weekly basis.

Prisons Psychologist

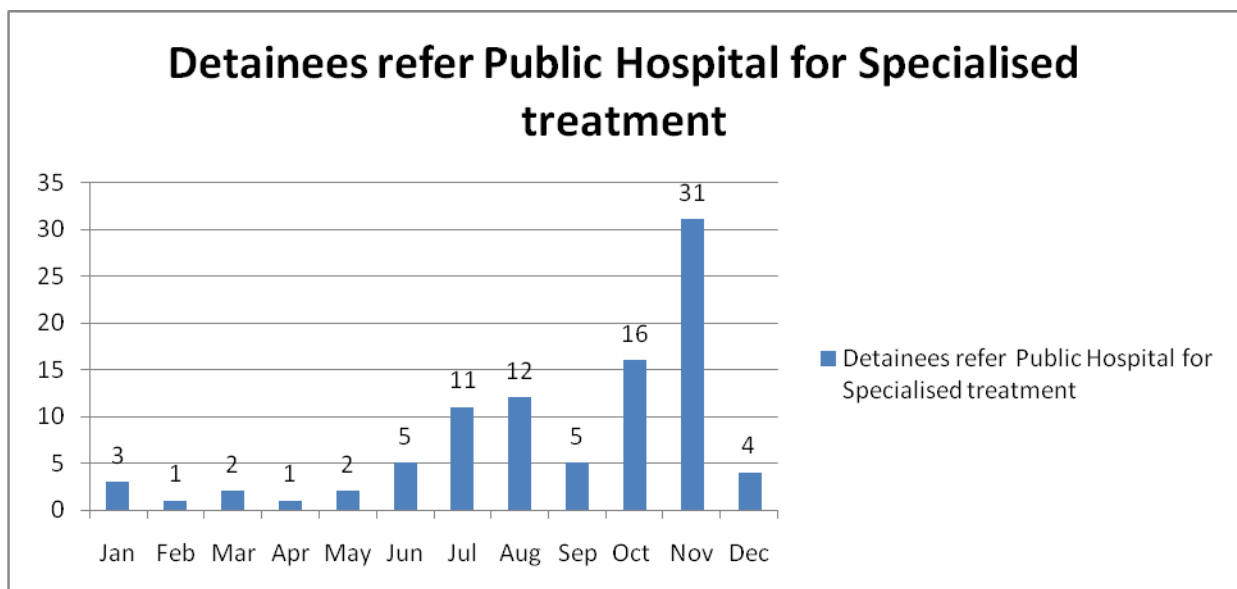
A full time Prisons Psychologist has been recruited to provide psychosocial support to detainees and officers of the Prison Department. Psychological clinic are available in all prison institutions for detainees referred by Prison Medical Officer and to follow up cases on admission. In year 2019, 444 detainees have been seen by the Prisons Psychologist.

Prison and MOH& Wellness Partnership

Detainees have access to a full range of health-care facilities. here is a strong link between healthcare services in prisons and those in the community. A referral system has been established between the Prison Department and the Ministry of Health & Wellness, for proper

medical case management regarding health facilities not available in prison like X-ray, Scan, etc.

Chart below shows the number of detainees referred to public hospitals for specialized treatment.



ADDITIONAL SERVICE IN THE MPS

Ambulance Service and nursing coverage

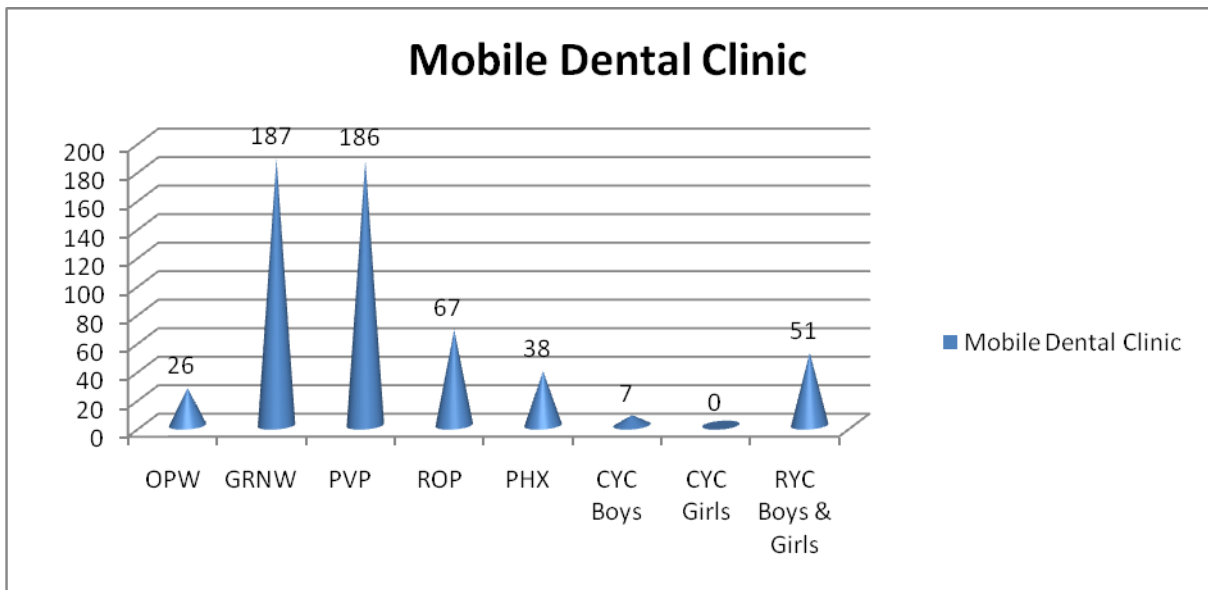
Moreover, an ambulance equipped with Basic Life Support (BLS) equipment is available to provide emergency care and transportation of emergency cases from prisons to public hospitals. It is also fitted with a range of active visual and audible devices. These devices have been helpful during medical/nursing coverage of activities done in the Mauritius Prison Service: Passing out Parade, Medals Ceremony, football tournament etc. During these events, first aid coverage has always been maintained.

Dental Clinic

The prison health service is also equipped with three dental clinics, two for male detainees located at BBP and EHSP and the other for female detainees at Women Prison Medical

Complex where treatments relating to extraction, scaling and filling are provided. For the year 2020, 2486 detainees and 123 Officers have received dental care at Prison dental clinic.

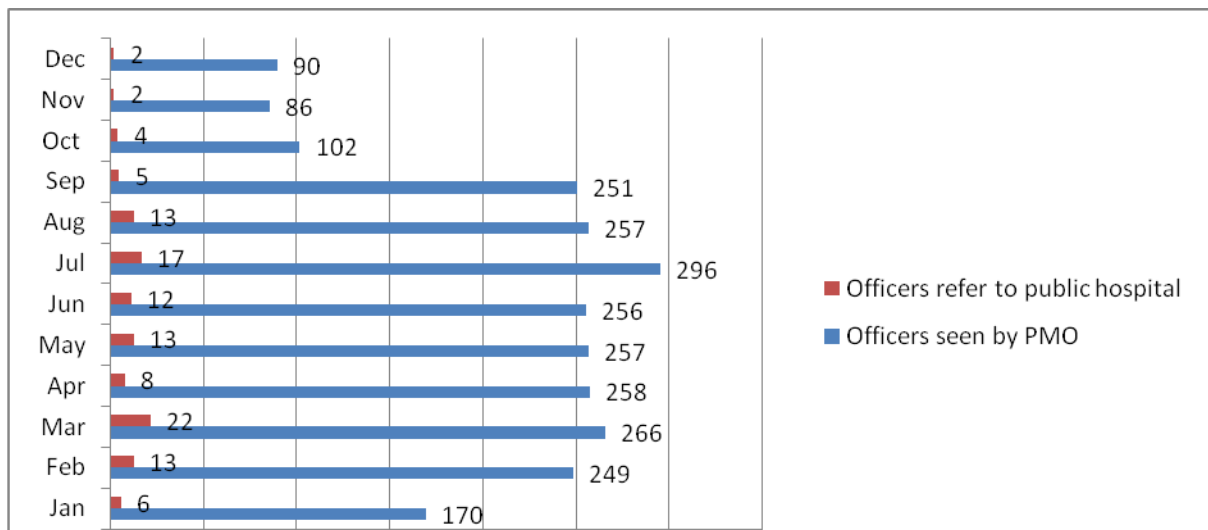
Since July 2020, a mobile dental clinic attended Prison Institutions to reduce movement of detainees outside prison setting.



Services Provided to Officers and families

Officers, their wives and children are entitled to free medical care and treatment. Medicines and medical treatment prescribed by the Prison Medical Officer are dispensed free of charge.

Chart below represent the number of officer who reported sick and examined by Prison Medical Officer and those referred to public hospitals.



Fighting Diabetes at Workplace Project (FDWP)

The Mauritius Prison Service (MPS) applied and benefitted with the Mauritius Research Council (MRC) under the Social Innovation Scheme, a two-year project on Fighting Diabetes at Work Place (FDWP) for all prison staff. Fighting Diabetes at the Workplace (FDW) Program is a socially innovative approach which involves a proactive, comprehensive and pragmatic evidence-based model, addressing the multiple risk factors and complications related to diabetes at the workplace. This approach recognizes that work affects health and vice versa and that both employees and employers should collaborate in a continuous improvement process to reduce the risks and life-threatening complications associated with diabetes that affect work productivity. The project started in November 2018 with a screening of prison officer.

Lectures

During the year 2020, Nursing Cadre contributed in several activities apart from providing nursing care to inmate and officers. They were involved in mock exercises in regards to fire, escape or Hostage in prison department and COVID-19 sanitary measures health talk. They were also involved in certain program at the prison training school in delivering lectures to recruits.

HIV and AIDS

Every detainee is screened for HIV and aids on admission; they received pre-test counseling prior to voluntary testing. For known case of HIV and aids, follow up and treatment are provided at prison level. Specific blood investigations like the CD4 cell count and HIV viral Load are done to maintain proper follow up and they are regularly seen by Aids Physician. Antiretroviral therapy is maintained in prison for these detainees. Additionally, detainees on antiretroviral treatment are allowed a high protein diet during their incarceration period to avoid side effect of these medication on their health.

Continuous Education Program

Regular training is offered to hospital cadre throughout year 2019. All of the hospital staff has been able to attend the civil service college courses which have been beneficial at supervisory level. The Central School of Nursing has offered seats for hospital staff in order to allow them to top up their certificate into a Diploma in Nursing.

Moreover update in treatment and care from the Ministry of Health and Wellness are communicated to the health section of the Mauritius Prisons Service. For example with the coming up of new treatment against Hepatitis C, a two days working session has been carried out for hospital staff.

To help in the prompt detection of HIV/ AIDS in prison, nurses are regularly invited to attend workshop on HIV/AIDS rapid testing organized by the National Aids Secretariat and Ministry of Health and Wellness.

COVID-19

In 2020, the Novel Coronavirus took the world by surprise. Many countries were not prepared, let alone properly aware of its existence. In the Mauritius Prison Service, the Novel Coronavirus was officially addressed to the Commissioner of Prisons on the 28th of January 2020 regarding precautionary measures in regards to COVID-19. Then, through a Strategic Management Meeting on the 04th of February 2020 whereby preliminary, precautionary measures against the risk of the COVID-19, were elaborated to all senior officer present.

An operational management plan was put in place to manage the entire COVID-19 process, throughout all institutions and hence the creation of desk officers (Prison Officers) for the temperature screening process and monitoring. Admission/Induction units namely, New Wing/Women Prison/CYC was quickly taken in charge and with ground reinforcement and immediate precautionary measures were put in place for any suspected incoming case of COVID-19. Mauritius Prison Service was in constant communication with The Ministry of Health and Wellness (MOHW) throughout the COVID-19 pandemic.

A massive screening program was organized by the Nursing and medical team of Mauritius Prison service in collaboration of the Ministry of Health and Wellness (MOHW). A total number of 1109 PCR COVID-19 screening test was carried upon prisons staff.



Following the introduction of the COVID-19 Rapid Antigen Test in Mauritius, the MOHW organised a crash course on the utilisation of the Rapid Testing kit at the PMOC, Victoria Hospital, Candos on the 25th of April 2020. A total number of 27 staff attended the course including 4 Prison Medical Officers (PMO).

Rapid antigen test (RAT) was carried out in all penal institution out by Hospital staff. The Prison Medical team worked relentlessly during the four days (27.04.20-30.04.20) to achieve a total of 2335 tests upon detainees throughout all the institutions in the Mauritius Prison Service.



PROCUREMENT & SUPPLY

The Procurement and Supply section plays an important role in the day to day functioning of the Mauritius Prison Service. It has inter-alia during the year under review procured the following:

EQUIPMENTS

- PABX EHSP
- VIDEO CONFERENCING PHOENIX PRISON

SECURITY

- CCTV CAMERA BEAU BASSIN PRISON
- FIRE ALARM SYSTEM, MAIN STORE
- DIGITAL RADIO

MACHINERY

- REFRIGERATION TRUCK, MAIN STORE
- LIGHT TRUCK



INFORMATION TECHNOLOGY OVERVIEW

E-PRISON PROJECT

In year 2020, the Mauritius Prisons Service in collaboration with the National Informatics Centre Services and the National Informatics Centre (NICS/NIC), New Delhi, India, has developed the four new modules mentioned below. A Hands-on-Training was impacted by the IT Expert of NICS/NIC, New Delhi India to eight (08) Staffs of the Mauritius Prisons Service who onward will act as Trainer for Trainees. The e-Prison Training Phase II was temporarily postponed due to rapid proliferation of Covid-19.

<i>Module 1</i>	<i>Prison Staff Intelligence Management System</i>
<i>Module 2</i>	<i>Duty management Information System</i>
<i>Module 3</i>	<i>Baby management Information System</i>
<i>Module 4</i>	<i>Prison Training Management System</i>

Furthermore, a New Module to keep record of unusual occurrences has been designed by NICS/NIC and same has been implemented in e-Prison Phase I. This new module is being used to query the number of Prison Defaults that has been committed by the inmates and if the case has been referred to Police, the module can be used to know the OB Number of that unusual occurrence including the Police Station where the complaint has been lodged.

Besides, this module is helping management to easily query the number of mobile phones, Sim cards, batteries, memory cards and other prohibited articles that have been secured in Prisons. The report displays the following details of the contraband:-

- (i) Date
- (ii) Make
- (iii) Model
- (iv) IMEI No
- (v) ICCID No
- (vi) Colour
- (vii) Police Station
- (viii) OB No

It is to be noted that this office is in process of developing following new modules and after successful development same shall be published in e-Prison Phase I

- (i) Visit of Barristers
- (ii) Escort for the Day.

FINANCE OVERVIEW



FINANCE OVERVIEW

Statement of Revenue

Head/Subhead of Revenue	Revenue(Rs)
Farm produce(Eggs, Poultry, Vegetables, Compost)	Rs 476,635.00
Prisons Service(Basketry, Furniture, Cakes, Bread Etc)	Rs 1,450,515.80
Fines	Rs 3,998,578.79
Cost	Rs 237,700.00

Statement of Expenditure

Head/Subhead of Expenditure	Amount (Rs)
Compensation of Employees	Rs 615,257,941.30
Goods & Services	Rs 146,225,685.86
Grants	Rs 59,999.66
Other Expenses (DPA)	Rs 50,000.00
Capital Expenditure	Rs 19,070,270.80
Total	Rs 780,663,897.62

Financial Highlights

Expenditure

In accordance with Budget Estimates 2019-2020, the Mauritius Prison Service had 1 Vote under its control namely 2-10.

An amount of Rs 799,000,000.00 was allocated under Vote 2-10 for the financial year 2020/21 for both recurrent and capital expenditure.

Chart No. 3 on page 27 shows a summary of the total recurrent expenditure incurred by the Mauritius Prison Service under Vote 2-10.

There has been a decrease in respect of Compensation of employees in the Financial Year 2020/21 by approximately **Rs 25, 762, 695.80** compared to actual expenditure in the last financial year.

Goods and Services have decreased by an amount of **Rs4, 667, 292.62** from **Rs 150, 892, 978.48** to **Rs 146, 225, 685.86**. This is actually due to the outbreak of the pandemic virus COVID-19 and the confinement period.

Revenue

A total amount of **Rs 1, 450, 515.80** for the Prison Services has been allocated in the current financial year 2020/2021 with a decrease in sale of goods and services by an amount of **Rs 599, 987.20** compared to the actual revenue in the last financial year.

Due to the outbreak of the pandemic virus COVID-19 and the confinement imposed, several activities such as auction sale and others could not be organised to raise funds and attain the estimated amount.

Dash Board – Annual Report on Performance

Reference is made to Circular No 7 of 2021 dated 15 October 2021 from the Financial Secretary, Ministry of Finance, Economic Planning and Development.

Financial Highlight in excel format is annexed at pages 86 and 87 respectively.

PRISON TRAINING SCHOOL

1. Self Defense

On Monday 20th January 2020, an ongoing weekly self defense course started on 20th January from 12 00 to 13 30 hours dispensed by Mr. Jean Bruneau Laurette and assisted by LPO Elizabeth with Prison Officers from BBP, NWP, CYC and WP, Gymnasium Prison Training School.

2. Visit of officers from Botswana Prison

On Monday 27th January 2020, a presentation on the Mauritius Prisons was presented by the Commissioner of Prisons in the Lecture Theatre of PTS to 04 delegates from Botswana namely: Mr. SilaeMotlalegesi, Mr.GertBizoIDekoker, Miss BinangNtshole and Mr. Noah Tselane Ramatebele.

3. Seminar on L'egalite de genres et la problematiques liees a la protection de la femme

On Tuesday 28th January 2020, twenty (25) Prison Officers participated in the seminar organized by the National Human Rights Commission from at the Rajcoomar Lallah Lecture Hall Office of DPP 16th Floor Garden Tower Port Louis. The seminar was graced by Mrs. Ameline, Expert on women Rights, Member of the UN CEDAW Committee and former Minister of Gender Equality in finance (2002-2005).

4. Enlistment of new recruits batch 1/2020

On 17th February 2020, nineteen (19) Trainee Prison Officers including five (05) Women Trainee Prisons Officers were enlisted by the Mauritius Prison Service. A welcoming ceremony was held at PTS with trainees and relatives.

5. Workshop on Information Highway

On Friday 28th February 2020, twenty-nine (29) officers attended above named workshop dispensed by Mr. Shaukat Consultat on Highway information.

6. Training on Ethic, Integrity and Good Governance with Prison Officers

From 5th March to 17th August 2020, three hundred and sixteen (316) officers attended above named lecture presented by Mr. Rajen Bablee Director of Transparency Mauritius.

7. Flag Raising Ceremony at Prison Headquarters

On 11th March 2021, nineteen (19) trainees participated in the flag raising ceremony held at the Prison Head Quarters.

8. Sensitization on Covid 19

On Wednesday 17th March 2020, a sensitization Programme on Covid 19 was presented by Principal Hospital Officer Kisanamy from Prison Medical Section with nineteen (19) Trainees.

9. Familiarization tour to Beau Bassin Central Prison

On 18th March 2020, nineteen 19 trainees proceeded to Beau Bassin Central Prison for familiarization tour.

10. Confirmation Ceremony

On 5th June 2020, a batch of one hundred and twenty nine (129) officers received their confirmation letters.

11. First Aid Certification

On 5th June 2020, one hundred and thirty one (131) officers received their certificate on above named course.

12. Familiarization tour to New Wing Prison

On 11th June 2020, seventeen (17) trainees proceeded to New Wing Prison for familiarization tour.

13. Familiarization tour at Eastern High Security Prison

On 17th June 2020, eighteen (18) trainees proceeded to Eastern High security Prison for familiarization tour.

14. Familiarization tour at Women Prison

On 19th June 2020, eighteen (18) trainees proceeded to Women Prison for familiarization tour.

15. Familiarization tour at Correctional Youth Centre & Open Prison for Women

On 20th June 2020, eighteen (18) trainees proceeded to above named institutions for familiarization tour.

16. Familiarisation tour at Richelieu Open Prison

On 19th June 2020, eighteen (18) trainees proceeded to Richelieu Open Prison for familiarization tour.

17. Sand training at Flic-en Flac Public Beach

On 3rd July 2020, Eighteen (18) proceeded to Flic en Flac public beach under the supervision of PTS Staff for sand training.

18. Appointment of batch 1/2019

On 9th July 2020, a batch of fifteen (15) Officers received their appointment letters from the Commissioner of Prisons.

19. Training on human Psychology

On 21st July 2020, thirty two (32) officers had a lecture with Miss Ramnauth Prison Psychologist.

20. Improving relations between Prison Officers and detainees – A Psychological Approach.

On 31st July 2020, a half day workshop was organised in collaboration with the National Human Rights Commission and sixty (61) officers were present.

21. Fire Safety Awareness

On 3rd August 2020, seventeen (17) trainees followed the fire safety awareness training conducted by Mr. Ansaluth from the Mauritius Fire Rescue Service.

22. Workshop on Reinforcing Integrity in the Prison Department

On 11th August 2020, fifty-six (56) Officers attended said workshop delivered by members from Independent Commission Against Corruption.

23. Lecture on Suicide Prevention

On 13th August 2020, forty-four (44) Officers attended above named lecture carried out by Be-Frienders Association.

24. Development of Prison Based Rehabilitation Programme

On 19th August 2020, sixty (60) Prison Officers attended above named lecture dispensed by Mr. Ibrahim Koodoruth Senior Lecturer at the University of Mauritius.

25. Sensitization on Drugs

On 20th August 2021, sensitization on the above mentioned was dispensed by the National Drug Secretariat with forty- two (42) officers.

26. Oath Taking and Certification Ceremony for Trainee Prison Officers batch 1/2020

On Friday 21st August 2020, eighteen (18) trainees had their Oath Taking and Certification ceremony at the Prison Training school.

27. Training on working with juveniles

On 31st August 2020, sixty nine (69) officers followed above named training dispensed by the office of the ombudsperson for children.

28. Training on excavator loader

A two weeks training on above named topic was dispensed to five (05) officers.

29. Self Awareness & reflective practice with Youth

On 2nd September 2020, said training was conducted by officers from the Ministry of Youth and Sports and fifty six (56) officers attended.

30. Comment aborder l'éducation sexuelle a votre enfant

On Thursday 3rd September 2020, training on above mentioned topic was delivered to sixty two(62) officers by Mrs. Monique Dinan from Mouvement D'aide a la Maternite.

31. Building Confidence through games

On 4th September 2020, Forty three (43) officers attended said training dispensed by Mr. Appavoo, Former Acting director at the Ministry of Youth Affairs.

32. The Effective Management of contracts at the MPS.

On Friday 11th September 2020, above lecture was delivered to seventy eight (78) Officers by Mr. K. Mosafeer, Director of Procurement & Supply at the Ministry of Finance Economic Planning and Development.

33. Life Skills Training Programme

From 21st September to 2nd October 2020, eighteen (18) officers followed above named training delivered by Mr. Appavoo, Former Acting Director at the Ministry Of Youth Affairs.

34. Training in Court Procedures

On 29th September 2020, thirty (30) Prison Officers attended training in Court Procedures conducted by Police Sergeant Mungrah from the Mauritius Police Force.

35. Instructor's Footdrill Course

From 5th to 9th October 2020, the foot drill training course for instructors was dispensed with seventeen (17) Officers by Police Inspector Soobrayen.

36. Armstoke Training

From 13th to 16th October 2021, seven (07) officers from the Correctional Emergency Response Team followed the above named training.

37. Defensive Driving Course

From 14th to 15th October 2020, training on defensive driving was dispensed to six (06) officers by the Mauritius Police force.

38. Training on Cybercrime

From 13th to 15th October 2020, Forty six (46) Officers followed above named training dispensed by Police Sergeant Toorab.

39. Training on recording of statement

On 22nd October 2020, thirty five (35) Senior Officers attended above mentioned training dispensed by Personnel from the Mauritius Police Force.

40. Nomination of Lead Prisons Officer

On 23rd October 2020, sixty (60) officers received their appellation letters as Lead Prison Officers from the Commissioner of Prisons.

41. Supporting Health Care in prisons for detainees and former detainees

On 19th November 2021, seventy five (75) officers attended said workshop dispensed by Pils and AILES Kinouete Association.

42. Road Safety March

On 18th November 2020, in the context of world Day of Remembrance for road traffic Victims five (05) Prison Officers participated in the Pacific March organised by the Ministry of Land Transport and Light Rail in collaboration with the Ministry of Public Service Administrative and Institutional Reforms.

43. Domestic Violence

On 26th November 2020, sixty four (64) Prison Officers attended above lecture conducted by Mr. Jason Meyer

44. Workshop on Gender Mainstreaming

On 30th November 2020, a full day workshop was presented on Gender Mainstreaming by Mr. Jason Meyer.

45. Appointment Ceremony

On 2nd December 2020, sixty (60) Trainee Prison Officers received their appointment letters from the Commissioner Prisons.

46. Workshop on HIV, Hepatitis and Tuberculosis

On 2nd December 2020, thirty five (35) Officers attended a full day workshop at Labourdonnais Waterfront Hotel dispensed by NGO'S Kinouete, PILS and AILES.

47. Launching Ceremony of the Ethics Guide for Prison

On 3rd December 2020, the above launching ceremony was held at Caudan Arts Centre and forty eight (48) Officers attended.

48. Award for National Day Ceremony

On 4th December 2020, the National Day Award Ceremony was celebrated and following number of officers was decorated:-

1. Thirty six (36) Officers President's Long Service and Good Conduct Medal
2. Seven (07) Officers First Clasp to the President's Long service and Good Conduct Medal
3. Fifty one (51) Officers Second Clasp to the President's Long Service and Good Conduct Medal

49. Annual Student Day

The Annual student day was celebrated at the Prison Training School on 29th December 2020, organised by the Prison Officers Welfare Association. A shield was presented to officers as well as their wards that have successfully got through in their examinations PSAC, SC, HSC, Diploma and Degree.

HUMAN RESOURCE

Number of Staff on Establishment in post as at 31 December 2020

GRADE	MALE	FEMALE	TOTAL
Commissioner of Prisons	1	0	1
Deputy Commissioner of Prisons	3	1	4
Assistant Commissioner of Prisons	3		3
Woman Assistant Commissioner of Prisons		1	1
Superintendent of Prisons/Senior Superintendent of Prisons	7		7
Superintendent of Prisons/Senior Superintendent of Prisons (Works)	1		1
Manager, Financial Operations		1	1
Assistant Manager, Financial Operations		1	1
Principal Financial Operations Officer		2	2
Financial Officer/Senior Financial Officer		2	2
Assistant Financial Officer		3	3
Manager (Procurement and Supply)	2		2
Assistant Manager (Procurement and Supply)	2		2
Procurement and Supply Officer/Senior Procurement and Supply Officer	2		2
Assistant Procurement and Supply Officer	4	2	6
Assistant Manager, Internal Control		1	1
Internal Control Officer/Senior Internal Control Officer	1		1
Office Management Executive		3	3
Office Management Assistant		4	4
Office Supervisor		1	1
Management Support Officer	6	14	20
Confidential Secretary		1	1
Word Processing Operator	1	3	4
Head Office Auxiliary	1		1
Office Auxiliary/Senior Office Auxiliary	2	2	4
Prisons Driver (On Shift)	9		9
Driver	1		1
Security Guard	3		3
Chief Hospital Officer	1		1

ANNUAL REPORT 2020

Principal Hospital Officer (Male)	4		4
Senior Hospital Officer (Male)	8		8
Senior Hospital Officer (Female)		2	2
Hospital Officer (Male)	13		13
Hospital Officer (Female)		7	7
Chief Prisons Welfare Officer	1		1
Principal Prisons Welfare Officer	2		2
Senior Prisons Welfare Officer	3		3
Prisons Welfare Officer	10	2	12
Assistant Superintendent of Prisons	40		40
Assistant Superintendent of Prisons(Industries)	1		1
Woman Assistant Superintendent of Prisons		5	5
Prisons Psychologist		1	1
Prisons Catering Administrator	1		1
Principal Prisons Officer	110		110
Principal Prisons Officer (Industries)	6		6
Principal Prisons Officer(Works)	5		5
Principal Woman Prisons Officer		8	8
Senior Officer Cadet (Male)	5		5
Senior Officer Cadet (Female)		1	1
Prisons Officer/Senior Prisons Officer	925		925
Woman Prisons Officer/ Senior Woman Prisons Officer		91	91
Receptionist/ Telephone Operator	4	1	5
Cook (on roster)	9		9
Automobile Electrician	1		1
Blacksmith	1		1
Carpenter	8		8
Mason	10		10
Motor/Diesel Mechanic	1		1
Motor Mechanic	1		1
Panel Beater	1		1
Plumber and Pipe Fitter	2		2
Tinsmith	1		1
Stores Attendant	2		2

REHABILITATION & WELFARE PROGRAMME

Introduction of the Welfare Unit

The Prison Welfare Unit is an important component in the Prison Management System. The Unit operates in close collaboration with the Officer in Charge of the different institutions to ensure that the different activities, geared towards the rehabilitation and reinsertion of adult detainees and juveniles, are carried out in an effective way. Welfare officers cater for one specific institution at least and are therefore responsible for the welfare of detainees by attending to their requests and complaints.

The Welfare Officer assists the officer in charge by attending the Reception Board, the Discharged Person Aid Committee, in the implementation of constructive activities and the Adjudication Board for detainees. The Welfare Officer also attends the CYC Board of Visitors for Boys.

Taking care of at least one institution, the Prisons Welfare Officer looks after the welfare of detainees and generally deals with legal, social and family problems of detainees and liaises with detainees' families. The Prisons Welfare Officer is as well the link between any penal institution and NGOs including moral instructors.

In his quest to deliver a quality service, clearances are sought from competent authorities prior to allowing non-state actors inside any prison. Furthermore, the collaboration of Governmental organizations and the private firms are being enlisted for the enhancement of skills and knowledge across all the penal institutions.

Dissemination of information to detainees admitted at the Induction Units forms part of the core duty of Welfare officers to enable particularly those coming to prison for the first time to cope with the new environment.

As a result, Welfare officers are bound to interview every detainee on admission and connect with their respective families with a view to facilitate communication through visits, telephones and if the need is felt through Skype as well. A family outreach centre has been put in place in several institutions to enable Welfare Officers help families overcome difficulties arising.

REHABILITATION PROGRAMME

Educational Programme

Educators from the Ministry of Education are seconded for duty to dispense Numeracy & Literacy programme to detainees.

Arts & Paintings

Library Book Facilities

Recreational Activities

Football; Volleyball and Basketball

Indoor Games: Carrom, Domino, Ludo, Drought and Chess

Television

Personal pocket radio

Drug Rehabilitation Programme

Individual / Group Counselling

Tai Chi

Yoga & Meditation

Peer Support Scheme

Tobacco Cessation Unit

Faith-based Programme

Detainees have received spiritual and moral instructions by Religious Ministers at the RC Chapel; Hindu Temple; Tamil Temple and Mosque on a regular basis at least once weekly.

All facilities are provided to detainees for prayer sessions and fasting on specific occasions.

Vocational Training

All convicted detainees and some selected remand detainees are enlisted on prison labour and they perceived an Enhanced Earnings Scheme as applicable.

Detainees who have followed MITD-approved training programme leading to National Certificate Level 3 (NC3) are as follows:

PVP – 5 detainees in Welding & Metal Fabrication

PVP – 5 detainees in Pastry

Women Prison – One woman detainee in Garment Making

Pre-Release Programme

These programmes are being carried out for detainees prior to their release by dedicated NGOs and include life skill programme and psycho-social support on a need-based. Thereafter, post-release programme is ensured as a follow-up and also include working with their relatives and prospective employers.

Contact with the Outside World

Detainees have the following means to stay in contact with their relatives:

Visit by relatives: once every fortnight

Telephone Booth facilities: once weekly

Skype sessions especially for foreigners; those not receiving normal visits; those whose relatives are abroad; inter-institutions visit; in some cases of funeral of a near relative and during lockdown when normal visits were temporarily suspended.

Letters

Official visits by legal counsel; Embassies/Consulates; NGOs and religious ministers.

OTHER ACTIVITIES

Agreement with Exotech

An Agreement was signed with a private enterprise – Exotech Ltd on 01.09.2020 to enable detainees at EHSP to repair cement bags for Holcim Lafarge. Detainees involved in this project perceived a stipend.

Agreement with Ministry of Social Integration

An Agreement was signed on 23 July,2020 with the Social Integration Division of the Ministry of Social Security, National Solidarity & Social Integration with a view to reinforce Rehabilitation & Resettlement of Detainees and to have a proper Monitoring & Evaluation of NGOs involved in this process.

My Business Programme – SME Mauritius

15 detainees at PVP followed the My Business Programme with SME Mauritius in August 2020 with a view to set up their own business and receive relevant support upon release.

Brick by Brick Project – NGO Not A Number

Two cohorts of 10 detainees followed 150-hrs training in Masonry at PVP in August and September 2020 with the collaboration of NGO Not A Number, Holcim Lafarge and MITD.

Assemblage Des Meubles – Courts Mammouth

Detainees of EHSP have continued this project which initially started in 2018 and they are receiving a stipend as appropriate.

Bio-Farming CYC

Inmates of CYC followed a bio-farming course by FAREI and a donation of garden equipment was held on 13.08.2020 by the US Embassy and NGO KINOUETE.

Endemic Plant Project at PVP

Detainees were involved in an Endemic Plant Project at PVP with the collaboration of NGO FORENA and Australian Embassy. The inauguration ceremony was held on 12 November 2020.

WORKSHOP OVERVIEW



Introduction

In collaboration with MITD, vocational, Agricultural and Technical training are dispensed to detainees by qualified prison officers who are holders of NTC 2 & 3, City & Guilds and other related advanced certificate, the under-mention courses are dispensed in the following fields at Tremplin Vocational Training Centre at Petit Verger, Women Prison, New Wing and Eastern High Security Prison:

- Carpentry & Joinery
- Welding & Metal Fabrication
- Bakery & Pastry
- Tailoring / Garment Making

Detainees had followed courses in the above mention fields; they were thereafter holders of a National Trade Certificate Level 3. Some of them even ranked first at national level.

Works section comprises of a group of forty (40) qualified Officers of different grades in different fields. They are assisted by twenty-three (23) qualified civilian workers. The Works section caters for all repairs, maintenance and new structural projects for the whole department. The following units fall under the direct responsibility of the Works Section.

- Draughtsman and Planning Unit
- Masonry
- Plumbing Unit
- Electrical Unit
- Electronic Unit
- Air conditioning & Refrigeration Unit
- Painting Unit
- Block Making Industries
- Blacksmith Industries

Tailor Workshop

S/N	Items	Quantity (Units)			Total
		BBP	PVP	EHSP	
1	Green Trousers	105	220	551	876
2	Green Overall	56	17	78	151
3	Orange Drills	75 sets	297 sets	983 sets	1355 Sets
4	Bed sheets	133	455	179	767
5	Towel		1450	1078	2528
6	White overall for detainees		60	111	171
7	White cap		8	80	88
8	Tray cover		4		4
9	Face mask		300	9283	9583
10	Pillow cases		35	98	133
11	Cutting of Eco bags		2000		2000
12	Apron		10	85	95
13	Hospital Gown			152	152
14	Florescent Green Sets			487	487
15	Florescent Green Shirts			447	447
16	Bed sheets for detainees			764	764
17	Pastry coat			43	43

Tailor Workshop Women Prison

S/N	Items	Quantity (Units)
1	Cut and prepared for officers	50
2	Cut and prepared for detainees	4

ANNUAL REPORT 2020

3	Sew skirt for officers	71
4	Sew tunic for officers	3
5	Sew waistcoat for officers	7
6	Sew skirt for detainees	17
7	Sew trousers for detainees	70
8	Trousers for officers	4
9	Sew pregnancy dress	11
10	Sew short for Remand	90
11	Sew short for convict detainees	3
12	Sew blouse for convicts	28
13	Sew Muslim pants	4
14	Sew scarf for detainees	10
15	Sew curtains for workshops	5
16	Mending for detainees	294
17	Mending for officers	81
18	Sew key pouch	2
19	Sew pillow cases	292
20	Sew underwear	4
21	Sew 'echarpe' for band	2
22	Sewing face masks	4361
23	Sew overall for ENT	90
24	Sew bed sheets for ENT	41
25	Sew protective clothes for nurse	101
26	Sew night dress for detainees	83
27	Pillow for detainees	9
28	Sew night short for detainees	12
29	Night blouse for detainees	30
30	Bed sheets	90
31	Mattress cover	9
32	Table mat	2
33	Ladies bag	2

ANNUAL REPORT 2020

S/N	Items	Quantity (Units)
34	Towel holder	1
35	Tissue holder	5
36	Hat	6
37	Bed Cover	1
38	Bags	111
39	Basket	1
40	Nighties for Remands	55
41	Sanitizer cover	10
42	Towel for detainees	55
43	Flannel towel	10
44	Aprons	2
45	Paper flowers	50
46	Sega skirts for end of year	4
47	Sega blouse for end of year	4

Garment Making Workshop Women Prison

S/N	Items	Quantity (Units)
1	Sew skirt	13
2	Trousers Repaired	17
3	Sew trousers	6

ANNUAL REPORT 2020

4	Aprons	66
5	Table cloth with napkins	5
6	Shirt repaired	11
7	Skirt repaired	26
8	Kitchen napkins	29
9	Scarves for kitchen	12
10	Face masks	8775
11	Trousers cut	2
12	Skirt cut	1
13	Curtains for CERT Office	6
14	Set of uniform	2
15	Bags	20
16	Dress for children	44
17	Painted aprons	12
18	Kitchen towel sets	5
19	Embroidered bed sheets	1
20	Uniform repaired	9

Bakery

S/N	Institution	Number of loaves produced
1	New Wing	1,835,836
2	PVP	774,395
3	EHSP	866,485
	Total	3,476,716

Vegetable Garden

SN	Items	BBP	PVP	ROP	EHSP	WP	Total
		Quantity (Kgs)					
1	Calabash	88	1711	1483.45		134.6	3417.05
2	Tarrow leaves	72	148	3505.9			3725.9

ANNUAL REPORT 2020

3	Eggplant	351.5	2229	2626.6		188	5395.1
4	Turnip	858	610	5519.05		145	7132.05
5	Breadfruit	617	36	25		20	698
6	Carrot	28	-	205.55			233.55
7	Cabbage	315	2641	3447.8	78		6481.8
8	Spices	597	157	303.2	1	14.21	1072.41
9	Bokchoy	1233	533	5145.25			6911.25
10	Amaranth leaves	36.5					36.5
11	Mangoes	85		268			353
12	Chillies	5.75	11.5	217.027		0.8	235.077
13	Moringa leaves	18					18
14	Garlic	32		10.02			42.02
15	Tomatoes		1606			165.4	1771.4
16	Potatoes		8907				8907
17	Cucumber		3185			19.9	3204.9
18	Beetroot		388	81.25			469.25
19	Fresh bean		250	101.2		23.85	375.05
20	Pumpkin		27			26	53
21	Coriander		82.5	50.1	6		138.6
22	Onion		2515	388			2903
23	Green banana			2223.95		26	2249.95
24	Watercress			65.8			65.8
25	Jack fruit			491.4			491.4
26	Green “brede”			44		140.3	184.3
27	Cowpeas			22.95			22.95
28	Lettuce			55			55
29	Cauliflower			217.5			217.5
30	Chayote					6	6
Total		4336.75	25037	26497.997	85	910.06	56866.807



Pastry

Items	Institutions			Quantity
	PVP	EHSP	WP	
French cakes	2703			2703
Half cakes	130		2261	2391
Mini cakes	8469	15768	67069	91306
Large cakes		5874		5874
Plum cakes	169		355	524
Birthday cakes	83		197	280
Pizza	06			06
New Year cakes		1100		1100
Night officers cakes			74	74
Whole cakes for detainees			1116	1116
Mary cakes			40	40
Buche de Noel			21	21
Kermess 2022			2044	2044
Event in prison normal cakes			416	416
Event in prison mini cakes			4490	4490
Bread normal loaves			32936	32936
Butter loaves			9420	9420
Total	11560	22,742	120439	154741

Poultry Farm

S/N	Particulars	Quantity (Units)
1	Slaughtered	20129
2	Death	2789
3	Manure produced	1695 Kgs
4	Eggs production	481,285

Aluminium Workshop

S/N	Description	Quantity
1	Swing doors	22
2	Partition	01
3	Fix screen	03
4	Kitchen set	12
5	Air vent	08
6	Oversize partition	05
7	Sliding Window	08
8	Double door	02
9	Double swing door	01
10	Windows	09

Carpenter Workshop - BBP

SN	Items	Quantity (Units)
1	Small Cupboard	01

ANNUAL REPORT 2020

2	Jewel box	01
3	Furniture of water dispenser	01
4	Cavadee shoulder stand	01
5	Key box cupboard	01
6	Photo frame for Hindu temple	01
7	Wooden door for Hindu temple	01
8	Wooden support	01
9	Cap holder	02
10	Card holder	60
11	Reception box	01
12	File box	02
13	L-Shape office table	01
14	Spatula handle	01
15	Name plate HR department	01
16	Wooden frame	08
17	Wooden shelve	01
18	Wooden shield GRNW	01
19	Wooden screen “paravent” CP	01
20	Printer table	01
21	Photo frame CP	01
22	Small shelf	01
23	Wooden hanger	01
24	Jewel box gift	01
25	Small telephone cabinet	01
26	MDF table	01
27	Truncheon for officers	22
28	Wooden Screen “ paravent”	01
29	Baton of honour and stand	01
30	Wooden bottle holder	01
31	Shield	04
32	Truncheon delivered to store	19
33	Chopping board	05

ANNUAL REPORT 2020

SN	Items	Quantity (Units)
1	Solitaire frame {Gift}	20
2	Jewel box in progress	15
3	Barrel "Tonneau"	02
4	Spatula	01
5	Name plate	12
6	Decorative card {CP Gift}	10
7	Jewel box {CP Gift}	05
8	Candle holder	10
9	Corner shelves	05
10	Wall decorative shelves	10
11	Inventory board	30
12	Key boxes	05
13	Kitchen wall unit MDF	03
14	MDF first aid box	05
15	Letter box	05
16	Decorative pencil holder	10
17	Chowky	10
18	Belna	06
19	Wooden spatula	03
20	Card holder	06
21	Jewel box	03
22	Office table MDF	01
23	Note book container	01
24	Truncheon	02
25	Card holder	01
26	Wooden bench	04
27	Barrel "Tonneau" in progress	06

SN	Items	Quantity (Units)
1	Drawers	04
2	Chair	01

ANNUAL REPORT 2020

3	Chair	02
4	Chair	02
5	Arm chair	01
6	Metal chair	02
7	Door and tower bolt	01
8	Cupboard	01
9	Flush door	08
10	Chair Yard No6	01
11	Wooden arm chair	01
12	Wooden chair	01
13	Wooden table + drawers + chair	01
14	Wooden chair	01
15	Arm chair	01
16	Flush door	01
17	Fixation of toilet doors -WP	04
18	Bathroom door -WP	01
19	Spatula	01
20	Footrest	01
21	Back-rest 4"	01
22	Coffee table	01
23	Table	01
24	Curtain holder + rod	10
25	Flush door	01
26	Jewel boxes	10
27	Deco barrel "Tonneau"	06
28	Re-polish cupboard	01
29	Timber for inventory board	30
30	Architraves for card holder	10
31	Drawer rail	01



Others

Cut six (06) pieces of plywood 12'' * 16''

Cut one (01) piece of plywood 3'' * 72'' Block A

Cut six (06) pieces of plywood 15'' * 18'' kitchen

Cut plywood 41'' * 25'' * 6mm

Re-flooring plywood 66 ¾'' * 62''

Cut and fix plywood 904mm * 1670mm * 6mm

Disassemble and reassemble of one (01) set of sofa
and two (02) tables

Drawing and carving of four (04) knife holder

Carving of ten (10) jewel boxes

Carving of jewel boxes

Demolishing of two (02) cell roofing

Carving and varnishing of three (03) jewel boxes

Work on padded cell in progress

Surface preparation of five (5) furniture CP

Carpenter Workshop – EHSP

S/N	Particulars	Quantity (Units)
1	Ironing Table	2
2	Whiteboard	1
3	Notice Board	1
4	Shelves	9
5	Lockers for officers set of 04	14
6	office table	8
7	wooden window frame	12
8	photo frame	8
9	cell table	181
10	mirror frame	4
11	board basketball	4
12	letterbox	6
13	barrel	2
14	coat hanger	4
15	telephone shelves	5
16	cavadee shelf	1
17	repair table	2
18	repair panel doors	4
19	cut plywood for metal shelves	12 sheets
20	tower hanger	3
21	coffee table	2
22	decorative shelves	2
23	wooden benches	4
24	television box	1
25	shelves for velfire	2
26	Meranti 8x1 on metal for benches	30 metre

Metal workshop – BBP

S/N	Manufacture	Quantity (Units)
1	Metal door for dog compound	01
2	Grill door	01
3	Burner stand for kitchen	08
4	Strong door at welfare office	01
5	Expanded metal frames on gate BBP	10
6	Strong metal door at reception office	01
7	Security grill in reception office	01
8	Metal stand for safe in reception office	01
9	Over head projector stand at training school BBP	01
10	Trolleys for metal Workshop	02
11	Strong metal door in metal workshop	02
12	Burglar proof and fixed in metal workshop	05
13	Metal pin for garden	02
14	Sign board for nightingale medical centre	01
15	Flag pole for nightingale medical centre	02
16	Metal rack and fixed at metal workshop	01
17	Tower bolt to be used on metal doors	10
18	Strong door fixed in proposed padded cell	01
19	Metal sheet frame fixed in padded cell	02
20	Metal sheet frame fixed in office next to padded cell	01
21	Strong metal door for office at medical unit	01
22	Waste bin for kitchen	01

S/N	Repairs	Quantity (Units)
1	Gate at officer's mess	02
2	Cell doors in medical unit	03

Others

One (01) strong door fixed at CO's Office – “telephone access”

Create opening in grill barricade in front gate lodge

Removal of racks from ex. Medical unit and transferred to nightingale medical centre

Welding of scaffolding in yard No 2

Fixed one (01) grill door on cubical unit yard No 2

Welding one (01) metal tower bolt – Dog compound BBP

Metal workshop – NWP

S/N	Manufacture	Quantity
1	Expanded metal frame and welded on beds in cells	32

S/N	Repairs	Quantity
1	Trolley for bakery	08
2	Trolley for kitchen	02
3	Metal box for kitchen	01
4	Cell doors in block	20

Metal workshop – Women Prison / Open Prison for Women

S/N	Manufacture	Quantity
1	Security door kitchen	01

S/N	Repairs	Quantity
1	Metal bed	10
2	Metal bench for medical unit	01

Others

Fixed fourteen (14) beds in dormitory

Welding of pole at green house

Welding of door frames

Fixed four (04) tower bolts on officer's locker

REHABILITATION YOUTH CENTER

S/N	Manufacture	Quantity
1	Strong metal doors	04
S/N	Repair	Quantity
1	Tower bolt on grill door	02
OTHERS		
Welding of bars on burglar proof		

OTHERS	
CYC	Manufacture and fixed on (01) strong door in kitchen
RYC GIRL	Repaired one (01) grill door
PHNX	Welding of window frame in tower Manufacture of thirty (30) fixing parts to be used on erection of roof top

Metal Workshop – PVP

S/N	Manufacture	Quantity (Units)
1	Manufacture and fixation of stands for flour at PVP store	02
2	Manufacture of frames for Phoenix Prison	04
3	Manufacture and fixation of table for bakery	01
4	Manufacture and fixation of stands for brinks	02
5	Manufacture of stand for flour at bakery	01
6	Fabrication of dough cutter for bakery	03
7	Fabrication of display panels for endemic plants	40
8	Fabrication and fixation of stand table for microwave oven at canteen	01
9	Manufacture and fixation of door of water pump for FORENA nursery	01
10	Fabrication of pins for Ferguson tractor for BBP	02
11	Manufacture and fixation of metal cover at BBC waste water	01
12	Fabrication and fixation of metal cover for a metal box	01
13	Manufacture of security grill door for kitchen	01
14	Manufacture of metal cover for garden	01
15	Manufacture and fixation of metal door for IVTB store at BMI	01
16	Manufacture of stand for water sinker for GRNWRP	01
17	Manufacture of table stand for carom board for Officers Mess	01
18	Manufacture of strong windows for MITD Wood	02

S/N	Repairs	Quantity (Units)
1	Repair poles at main entrance	02
2	Repair sword for animal farm	01
3	Repair wheel barrows for kitchen	02
4	Repair knife for kitchen	01
5	Repair window handle for visitor's waiting room	01
6	Repair of wheel barrows for animal farm	03
7	Repair of cooking spoon for kitchen	02
8	Repair and painting flag poles at Main Entrance	02
9	Repair strong door at SPU	02
10	Repair grill door in corridor in front of ASP's office	01

OTHERS

Fixation of main gate door outside the compound of the prison
 Preparation and fixation of a tower bolt at CCTV room
 Painting of main gate outside the Prison Compound
 Fixation of tower bolt at toilet door at BMI
 Fixation of a knife holder at kitchen
 Fixation of a curtain support at BMI podium
 Fixation of 02 white boards at Officer in Charge Office
 Fixation of metal frames for beds of GRNWRP
 Lubrication of cell doors
 Sealed of waste cover behind kitchen main hole
 Fixation padlock at telephone unit
 Fixation of 01 solid door at reception office
 Fixation of 01 solid door at store
 Fixation of a padlock at PVP gym
 Fixation of fencing and razor blade at GRNWRP
 Painting of CCTV main door, handrail, steps, and frames
 Fixation of security grill door at kitchen
 Fixation of a padlock at FORENA Nursery
 Fixation of bars on container for builder's store
 Fixation of a stand for a fan at tailor workshop
 Welding of tower bolt at CCTV
 Fixation of expanded metal at ASP's Office
 Fixation of a toilet door at Dormitory D1
 Fixation of handles for windows in school
 Fixation of security grill windows in dormitory D1

Metal Workshop – EHSP

S/N	Works and Repairs performed	Quantity
1	Delivery of forks and graters to gardening section	02
2	Painting and maintenance of flag poles	02
3	Fabrication of feather trap for slaughtering house	01
4	Fabrication of basket ball board with ring for PEQ Unit	02
5	Manufacture chicken feather trap grill for slaughtering house	02
6	Supply and fix burglar proof opening for carpenter workshop	01
7	Supply and fix grill window for carpenter workshop	01
8	Fabrication of metal trolley for New Wing Prison kitchen section	01
9	Supply and fix clothes hanger frames for ebony and kestrel Unit	06
10	Supply and fix burglar proof openings for shoemaker	01
11	Fixing tower bolts in wickered grilled door at PEQ Unit	02
12	Fabrication of burglar proof openings for tailor shop and clothing and bedding	02
13	Fabrication of fencing poles for nursery/gardening section	09
14	Replace bathroom/toilet doors at ebony Unit into metal sheet 1/8	13
15	Fabrication of metal sleeve for Ebony Unit Medical Room	01
16	Supply and fix metal doors toilets and bathroom of Alamanda Unit	04
17	Supply and fix handcuff and leg-chains hanger for strong box of Gate lodge	04
18	Prepare works for fabrication of metal doors to be fitted at Gate lodge table	06
19	Fixation of metal doors in gate lodge concrete table	06
20	Fabrication of Rakes for nursery section	03
21	Fabrication of metal frames for football playground shed of EHSP	03
22	Fabrication of burglar proof for tailor shop and laundry	02
23	Fabrication of sliding gate for dumping area	01
24	Metal poles for clothes hanger at Geriatric Unit	04
25	Metal Sleeve for Reception Office	01
26	Fabrication of metal stand for Bread rolling machine for Bakery Unit	01

ANNUAL REPORT 2020

27	Fabrication of a strong metal cupboard for nursery Gardening Unit	01
----	---	----

Machine Shop Workshop

S/N	Production	Quantity
1	Low TV Cabinet	165 Units
2	Table	45 Units
3	Chairs	180 Units
4	Multipurpose Cabinet	10 Units
5	Kitchen Unit/Cabinet	325 Units

Shoemaker Workshop

S/N	Production	Quantity
1	Black Leather Boots	403 Pairs
2	Black Leather Light Shoes	502 Pairs
3	Black Leather Key packs	07 Units
4	ID Warrant Cards	230 Units
5	Aprons for slaughtering house	04 Units
6	Refurbishing of seats for Prisons Vehicles	03 Units
7	Fixing of leather straps on Truncheons	10 Units
8	Repairs of Officers Shoes	15 Pairs
9	Repair of belts for Officers	18 Units
10	Repairs and refurbishing of chairs for PMO	01 Units

Lafarge Workshop (Exo tech)

S/N	Particulars	Quantity
1	Delivery of Bags	40,000 Empty Bags delivered
2	Stock	2600 Empty Bags ready for delivery

Laundry Workshop

S/N	Particulars	Quantity (Unit)
1	Bed sheets	19433
2	Pillow Case	3913
3	Shirt	2763
4	Trousers	2882
5	Others	1526
6	Washing Machine Powder	209 kgs

Basket workshop

S/N	Particulars	Quantity (Units)
1	Synthetic sofa one seater	5
2	Synthetic sofa two seater	4
3	Synthetic sofa three seater	1
4	synthetic metal sofa three seater	1
5	synthetic sofa L-Shaped	1
6	Synthetic middle table	3
7	Synthetic oval table	1
8	Synthetic laundry baskets	6
9	Synthetic poufs	11
10	Synthetic small bench	1
11	Sea grass pouf	1
12	Rattan pouf	2
13	Sea grass flower pot holder	1
14	Tables renovation for school	3
15	Renovation of decorative ark near duty office	1
16	“Palemba” XXL rice straining baskets	20
17	“Palemba” XXL Bread Baskets	22
18	“Palemba” Vegetable Baskets	7
19	Artisanal Products	21

ANNUAL REPORT 2020

20	Decorative jewel boxes	12
21	Rattan laundry baskets with cover	2
22	Repairs of baskets for sale at kermesse 2020	50
23	Photo Frame	16

SN	Particulars	Quantity (Units)
1	Water hyacinth flower vase	5
2	Rattan mammoth cave baskets	32
3	Small Rattan mammoth cave baskets	10
4	Rattan waste paper baskets	16
5	“Macrame”	14
6	Pooja Baskets	9
7	Rattan Fruit baskets	4
8	Round Rattan tray baskets	18
9	Rattan Oval tray baskets	17
10	Square rattan tray baskets	2
11	Rattan flower vase	3
12	“Rotinage” of chairs	2
13	Decorative flower hanger	1
14	Decorative big rattan shark	1
15	Rattan square container	1
16	Round fruit baskets	5
17	Rattan duck baskets	4
18	Spice tray	2
19	Lamp shade	4
20	Rattan bread baskets	5
21	Square baskets	2

Locksmith workshop – BBP

ITEMS	MANUFACTURE	MODIFICATIONS	REPAIRS	FIXING OF LOCKS
KEYS	52	56	82	
LOCKS	44	67	48	
PADLOCKS			37	
PANEL LOCKS				16
SERVANT LOCKS				38
CELL LOCKS				17

These locks were being fixed at Phoenix, Beau Bassin, GRNWRP, PVP, Women Prison, New Wing, CYC Boys, CYC Girls, SPW and FOP.

General repairs and maintenance of locks and keys were done at different institutions where and when required.

Greasing of Cremone locks and main doors were done on a three months basis at BBP, New Wing, GRNWRP, CYC, PVP, Phoenix and Women Prison.

Locksmith Workshop– EHSP

- Tags for all units
- Repair and replace Beta fence locks
- Inventory of keys
- Repairs of locks
- Repairs of keys
- Maintenance of locks, Keys & Hinges
- Repair and Maintenance of security safes in all units
- Changing of Locks

Moreover a general repairs and maintenance on different locks were carried out when and where required in different units



Financial Highlights in Excel Format

Kindly provide for the main “Mission” of your Ministry as briefly as possible (one liner).

The Mauritius Prison Service serve society by keeping detainees in safe, humane custody and help prepare them for a useful life in society.

Total Expenditure FY 2020/21

Name of Ministry:

Expenditure	Rs
Recurrent	761,593,626.82
Capital	19,070,270.80
TOTAL	780,663,897.62

Summary Statement of Expenditure by economic categories

Details of Expenditure	Rs
Allowances to Minister	0
Compensation of Employees	615,257,941.30
Goods and Services	146,225,685.86
Grants	59,999.66
Social Benefits	
Other Expenses	
Acquisition of Non-Financial Assets	
Acquisition of Financial Assets	
Total Expenditure	

The categorisation of staff is broadly based on salary levels of the PRB Report. 'Top Management' normally refers to the chief executive involved in strategic management of the organisation. Senior/Middle management level generally consists of heads of sections/divisions/units who determine and execute policies.

Thus, for the purpose of presentation on the dashboard, the following categorisation of staff is adopted:

- (i) Top Management, salary \geq Rs100k
- (ii) Senior/Middle Management, Rs 40k < salary < Rs 100k
- (iii) Support & Others, salary \leq Rs 40k

Major Achievement/KPI

Any two major achievements of your Ministry for the financial year for which the annual report on performance is being prepared.

For e.g. improved international ranking, completion of a major project, major stride in a particular aspect relating to the Ministry.

1. A new CCTV system with 47 CCTV Cameras has been installed and is operational since 26 November 2020 at the Richelieu Open Prison.
2. The Prison Department is equipped with 170 new Digital Two-Way radios for enhancing Communication Network since 17 December 2020.

ABBREVIATIONS

◆ ADSU	-	Anti Drug and Smuggling Unit
◆ BBP	-	Beau Bassin Prison
◆ CJS	-	Criminal Justice System
◆ CYC	-	Correctional Youth Centre
◆ DCP	-	Deputy Commissioner of Prisons
◆ EHSP	-	Eastern High Security Prison
◆ GRNWRP	-	Grand River North West Remand Prison
◆ ICAC	-	Independent Commission against Corruption
◆ JNH	-	Jawaharlal Nehru Hospital
◆ MITD	-	Mauritius Institute of Training and Development
◆ MOHQL	-	Ministry of Health & Quality of Life
◆ MOU	-	Memorandum of Understanding
◆ MPF	-	Mauritius Police Force
◆ MPS	-	Mauritius Prison Service
◆ NMR	-	Nelson Mandela Rules
◆ NWP	-	New Wing Prison
◆ NGO	-	Non-Governmental Organization
◆ NICSI	-	National Informatics Centre Service Inc.
◆ OPCAT	-	Optional Protocol to the Convention against Torture
◆ OPW	-	Open Prison for Women
◆ PSS	-	Prison Security Squad
◆ PTS	-	Prison Training School
◆ PVP	-	Petit Verger Prison
◆ PWO	-	Prison Welfare Officer
◆ RIA	-	Reforms Institution Act
◆ ROP	-	Richelieu Open Prison
◆ RYC	-	Rehabilitation Youth Centre
◆ UNCHR	-	United Nations Convention on Human Rights
◆ UNODC	-	United Nations Office on Drugs and Crime

GLOSSARY OF TERMS

Absolute discharge is complete and unconditional release.

Admission rate is defined as the number of people admitted to prison in a given year per 100,000 mid-year population.

Assault is defined as physical attack against the body of another person.

Acquitted means dismissed.

Burglary is defined as unlawful entry into someone else's premises with the intention to commit a theft.

Conditional discharge is a sentence whereby an offender is released under certain conditions, e.g., regular reporting to police stations for a specified period of time.

Contraventions (least serious offences) are defined as offences that are punishable by:

Imprisonment for a term not exceeding 10 days;

Fine not exceeding 5,000 rupees.

Crimes (most serious offences) are defined as offences that are punishable by:

Penal servitude;

Fine exceeding 5,000 rupees.

Criminal case means dealing with an offender indicted for an offence.

Detainee is referred to as any person confined to prison and is classified as follows:

Convict: person sentenced to imprisonment.

Person on remand and trial: person charged for an offence with a court of law and awaiting judgment.

Drug offences are as spelt out under the Dangerous Drug Act 2000. They relate mainly to drugs like cannabis, heroin, hashish, opium, cocaine and other psychotropic substances.

Embezzlement is defined as the wrongful appropriation of another person's property that is already in the possession of the person doing the appropriating.

Fine defaulters are convicts sentenced to imprisonment for non-payment of fines; they either stay in prison for a specified period or are released as soon as they pay the fines.

Fraud is defined as the acquisition of another person's property by deception.

Intentional homicide is defined as death deliberately inflicted on a person by another person, including infanticide and abortion.

Juvenile is defined as person aged below 18 years.

Misdemeanors (less serious offences) are defined as offences that are punishable by:

Imprisonment for a term exceeding 10 days;

Fine exceeding 5,000 rupees.

Property offence includes theft, fraud, embezzlement, damage to property, and illegal possession of property and stolen goods.

Prison occupancy level is defined as the prison population divided by the prison capacity (number of beds).

Robbery is defined as the theft of property from a person, overcoming resistance by force or threat of force.

Sexual offence is defined as sexual intercourse or assault without valid consent. It includes sexual act, attempt to obtain a sexual act and dealing in obscene matters.

Theft is defined as the removal of property without the property owner's consent.

Victim is referred to as a person who has been affected by an offence committed by another person.